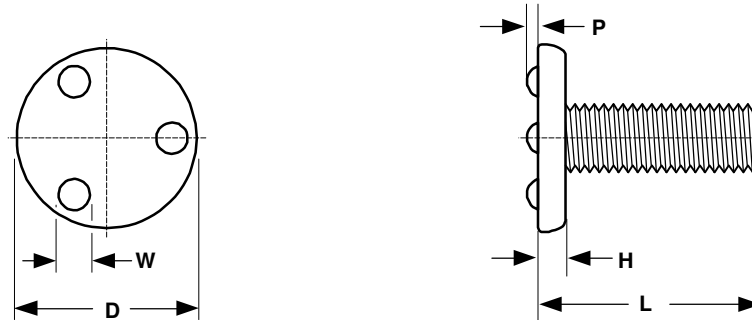


## Weld Screws With Projections Over Head Technical Specifications



\*Length of a weld screw is measured from the bearing surface of the head to the end of the shank.

Weld Screws With Projections Over Head											
Nominal Size or Basic Screw Diameter		Threads per Inch	D		H		P		W		
			Head Diameter		Head Height		Projection Height		Projection Width		
			Max	Min	Max	Min	Max	Min	Max	Min	
6	0.1380	32	.260	.240	.046	.036	.022	.018	0.055	0.045	
8	0.1640	32	.323	.303	.052	.042	.027	.023	0.075	0.065	
10	0.1900	24	.385	.365	.068	.058	.032	.028	0.085	0.075	
10	0.1900	32	.385	.365	.068	.058	.032	.028	0.085	0.075	
1/4	0.2500	20	.510	.485	.083	.073	.042	.038	0.105	0.095	
5/16	0.3125	18	.630	.605	.099	.089	.047	.043	0.125	0.115	
3/8	0.3750	16	.755	.725	.114	.104	.052	.048	0.135	0.125	
<b>Tolerance on Length</b>		Up to including 1": -0.03			> 1" up to including 2": -.06						

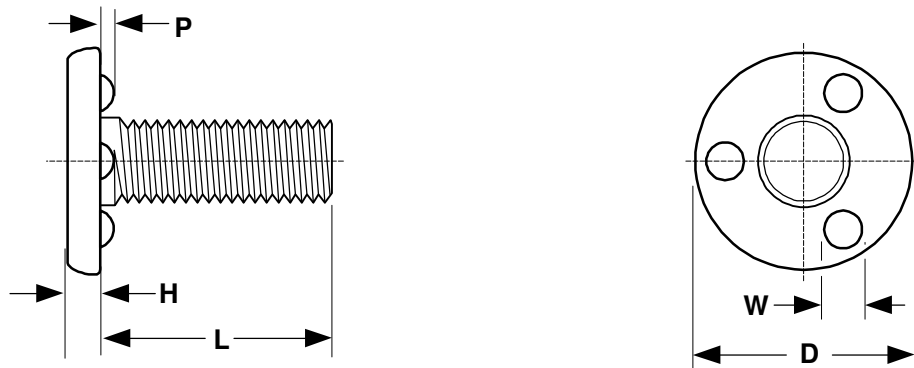
Description	A screw with a unified thread pitch and a low profile head with flat parallel surfaces. The top side of the head has three dome-shaped weld projections equally spaced 120 degrees apart.
Material	C1008 - 1010 welding quality carbon steel
Tensile Strength	60,000 psi., minimum
Length of Thread	Weld screws with shank lengths of 2 inches or less should have threads extending to within one thread of the top of the weld projections. Weld screws over 2 inches long should have a minimum thread length of 1-3/4 inches.
Finish	Weld screws have an un-plated finish to facilitate welding.



Tel: 1-800-479-0056  
 Fax: 1-888-411-2841  
 Email: [aspensales@aspenfasteners.com](mailto:aspensales@aspenfasteners.com)  
 Web: <http://www.aspenfasteners.com/>

Weld Screw Part Number Alias List - Projections Over Head						
Aspen Part #	Buckeye	Gripco		Aspen Part #	Buckeye	Gripco
SC491-632X14	GW 1104	NN-0632-S-0250		SC491-1024X1	GW 1516	NN-1024-S-1000
SC491-632X38	GW 1106	NN-0632-S-0375		SC491-1032X38	GW 1606	NN-1032-S-0375
SC491-632X12	GW 1108	NN-0632-S-0500		SC491-1032X12	GW 1608	NN-1032-S-0500
SC491-632X58	GW 1110	NN-0632-S-0625		SC491-1032X58	GW 1610	NN-1032-S-0625
SC491-832X38	GW 1406	NN-0832-S-0375		SC491-1032X34	GW 1612	NN-1032-S-0750
SC491-832X12	GW 1408	NN-0832-S-0500		SC491-1032X1	GW 1616	NN-1032-S-1000
SC491-832X58	GW 1410	NN-0832-S-0625		SC491-1420X38	GW 2106	NN-1420-S-0375
SC491-832X34	GW 1412	NN-0832-S-0750		SC491-1420X12	GW 2108	NN-1420-S-0500
SC491-832X1	GW 1416	NN-0832-S-1000		SC491-1420X58	GW 2110	NN-1420-S-0625
SC491-1024X38	GW 1506	NN-1024-S-0375		SC491-1420X34	GW 2112	NN-1420-S-0750
SC491-1024X12	GW 1508	NN-1024-S-0500		SC491-1420X1	GW 2116	NN-1420-S-1000
SC491-1024X58	GW 1510	NN-1024-S-0625		SC491-51618X34	GW 2712	-
SC491-1024X34	GW 1512	NN-1024-S-0750				

## Weld Screws With Projections Under the Head Technical Specifications



\*Length of a weld screw is measured from the bearing surface of the head to the end of the shank, excluding projections.

Weld Screws With Projections Under the Head											
Nominal Size or Basic Screw Diameter		Threads per Inch	D		H		P		W		
			Head Diameter		Head Height		Projection Height		Projection Width		
			Max	Min	Max	Min	Max	Min	Max	Min	
6	0.1380	32	0.323	0.303	0.052	0.042	0.022	0.018	0.055	0.045	
8	0.1640	32	0.385	0.365	0.068	0.058	0.027	0.023	0.075	0.065	
10	0.1900	24	0.448	0.428	0.068	0.058	0.032	0.028	0.085	0.075	
10	0.1900	32	0.448	0.428	0.068	0.058	0.032	0.028	0.085	0.075	
1/4	0.2500	20	0.575	0.550	0.083	0.073	0.042	0.038	0.105	0.095	
5/16	0.3125	18	0.755	0.725	0.099	0.089	0.047	0.043	0.125	0.115	
3/8	0.3750	16	0.880	0.850	0.114	0.104	0.052	0.048	0.135	0.125	
1/2	0.5000	13	1.005	0.975	0.146	0.136	0.062	0.058	0.156	0.145	
<b>Tolerance on Length</b>		Up to including 1": -0.031			> 1" up to including 2": -0.062			> 2": -0.093			

Description	A screw with a unified thread pitch and a low profile head with flat parallel surfaces. The underside of the head has three dome-shaped weld projections equally spaced 120 degrees from one another; for through-hole applications.
Material	C1008 - 1010 welding quality carbon steel
Tensile Strength	60,000 psi., minimum
Length of Thread	Weld screws with nominal lengths of 2 inches or less should have threads extending to within one thread of the top of the weld projections. Screws over 2 inches should have a minimum thread length of 1-3/4 inches.
Finish	Weld screws have an un-plated finish to facilitate welding.



Tel: 1-800-479-0056  
 Fax: 1-888-411-2841  
 Email: [aspensales@aspenfasteners.com](mailto:aspensales@aspenfasteners.com)  
 Web: <http://www.aspenfasteners.com/>

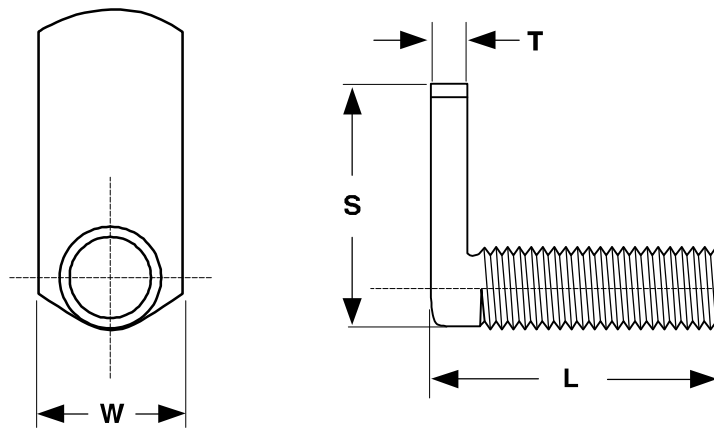
Weld Screw Part Number Alias List - Projections Under Head

Aspen Part #	Buckeye	Gripco	Aspen Part #	Buckeye	Gripco
SC492-632X14	HW 1104	MN-0632-S-0250	SC492-1032X1	HW 1616	MN-1032-S-1000
SC492-632X38	HW 1106	MN-0632-S-0375	SC492-1420X38	HW 2106	MN-1420-S-0375
SC492-632X12	HW 1108	MN-0632-S-0500	SC492-1420X12	HW 2108	MN-1420-S-0500
SC492-632X58	HW 1110	MN-0632-S-0625	SC492-1420X58	HW 2110	MN-1420-S-0625
SC492-632X34	HW 1112	MN-0632-S-0750	SC492-1420X34	HW 2112	MN-1420-S-0750
SC492-632X1	-	MN-0632-S-1000	SC492-1420X78	HW 2114	-
SC492-832X38	HW 1406	MN-0832-S-0375	SC492-1420X1	HW 2116	MN-1420-S-1000
SC492-832X12	HW 1408	MN-0832-S-0500	SC492-1420X114	HW 2120	-
SC492-832X58	HW 1410	MN-0832-S-0625	SC492-1420X112	HW 2124	-
SC492-832X34	HW 1412	MN-0832-S-0750	SC492-1420X134	HW 2128	-
SC492-832X1	HW 1416	MN-0832-S-1000	SC492-1420X2	HW 2132	-
SC492-1024X38	HW 1506	MN-1024-S-0375	SC492-51618X58	HW 2810	-
SC492-1024X12	HW 1508	MN-1024-S-0500	SC492-51618X34	HW 2812	-
SC492-1024X58	HW 1510	MN-1024-S-0625	SC492-51618X1	HW 2816	-
SC492-1024X34	HW 1512	MN-1024-S-0750	SC492-51618X114	-	-
SC492-1024X1	-	MN-1024-S-1000	SC492-51618X2	-	-
SC492-1024X114	HW 1520	MN-1024-S-1250	SC492-3816X1	HW 3316	-
SC492-1032X38	HW 1606	MN-1032-S-0375	SC492-3816X114	HW 3320	-
SC492-1032X12	HW 1608	MN-1032-S-0500	SC492-3816X112	HW 3324	-
SC492-1032X58	HW 1610	MN-1032-S-0625	SC492-3816X134	HW 3328	-
SC492-1032X34	HW 1612	MN-1032-S-0750	SC492-1213X114	HW 4420	-



Tel: 1-800-479-0056  
 Fax: 1-888-411-2841  
 Email: [aspensales@aspenfasteners.com](mailto:aspensales@aspenfasteners.com)  
 Web: <http://www.aspenfasteners.com/>

## Spot Weld Screws With 90° Flat Spade (no projections) Technical Specifications



Spot Weld Screws With Flat 90° Spade				
Thread Size	W	T		S
	Spade Width	Spade Thickness		Spade Length
	Ref	Max	Min	Ref
6-32	0.218	0.052	0.042	0.562
8-32	0.250	0.068	0.058	0.625
10-24	0.312	0.068	0.058	0.688
10-32	0.343	0.068	0.058	0.688
1/4-20	0.375	0.099	0.089	0.750
Tolerance on Length		< 1": + .000, -.031		1" to 2": + .000, - .060

Description	A externally threaded screw with a unified thread pitch and a spade shaped head 90° to the threaded shank. Ideal for use in confined areas and in applications requiring the thread to be offset from component surfaces.
Material	C1006 - 1010 welding quality carbon steel
Tensile Strength	60,000 psi., minimum
Finish	Weld screws have an un-plated finish to facilitate welding.