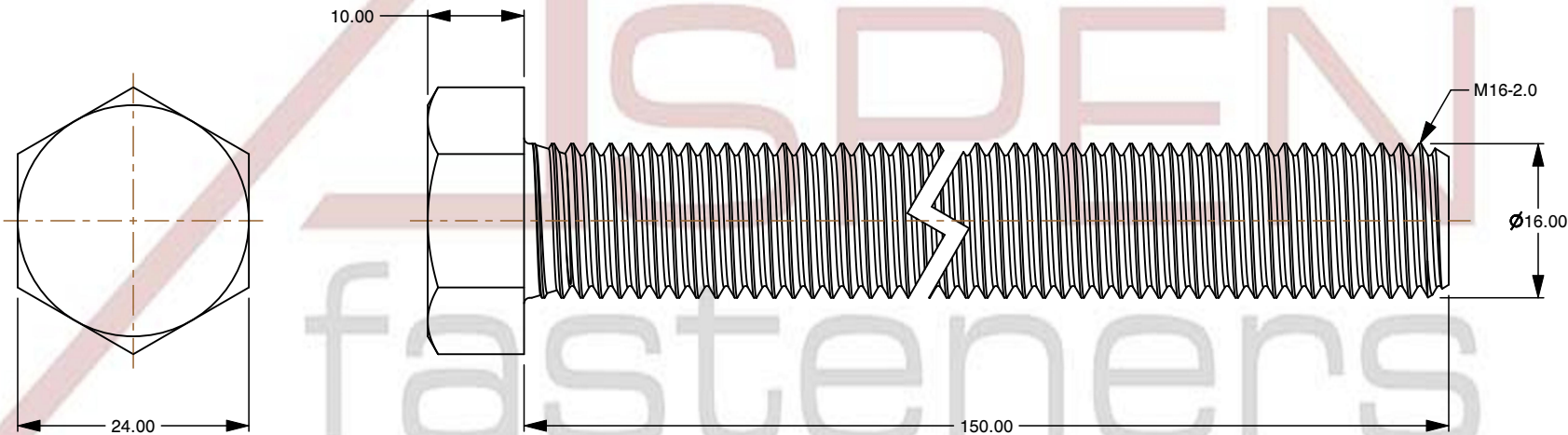
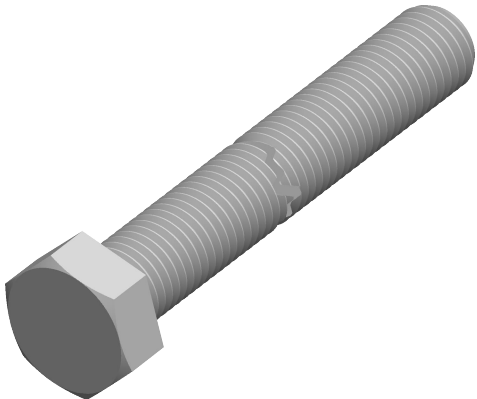



Specifications for: M16-2.0 X 150mm DIN 933, Metric, Hex Head Cap Screws Bolts, Full Thread,  
Nylon 6/6 with Glass, Black

Notes:

- Category: Cap Screws
- Head Style: Hex Head
- System of Measurement: Metric
- Drive Style: External Hex Drive
- Pitch: Coarse Thread
- Thread Length: Full Thread
- Thread Direction: Right-Hand Thread
- Point: Chamfered Point
- Material: Thermoplastic
- Material Grade: Nylon 6/6 50 Percent Glass Filled
- Coating: Uncoated
- Coating Color: Black
- Standards and Specifications: DIN 933



 www.aspenfasteners.com	This file and any associated information and specifications are provided for reference and evaluation purposes only and is subject to change without notice. Aspen Fasteners Inc. makes no representations, warranties, or guarantees as to the appropriateness, accuracy, completeness, or suitability for any purpose of the file, information or specifications. You are solely responsible for the use of the file, information, or specifications.	This document is the property of Aspen Fasteners Inc. and the information it contains may not be reproduced, disclosed, or shared with any third party without the expressed written permission of Aspen Fasteners Inc.	PRODUCT NAME M16-2.0 X 150mm DIN 933, Metric, Hex Head Cap Screws Bolts, Full Thread, Nylon 6/6 with Glass, Black	UNIT MILLIMETERS
				ISSUED 2025-01-26
		SCALE 1.368	PART NUMBER: TP008-1620X150	SHEET 1 of 1