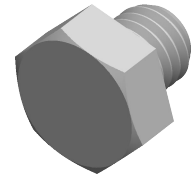


Specifications for: M8-1.25 X 8mm DIN 933, Metric, Hex Head Cap Screws Bolts, Full Thread, Polypropylene



Notes:

- Category: Cap Screws
- Head Style: Hex Head
- System of Measurement: Metric
- Drive Style: External Hex Drive
- Pitch: Coarse Thread
- Thread Length: Full Thread
- Thread Direction: Right-Hand Thread
- Point: Chamfered Point
- Material: Thermoplastic
- Material Grade: Polypropylene
- Coating: Uncoated
- Coating Color: Natural
- Standards and Specifications: DIN 933

