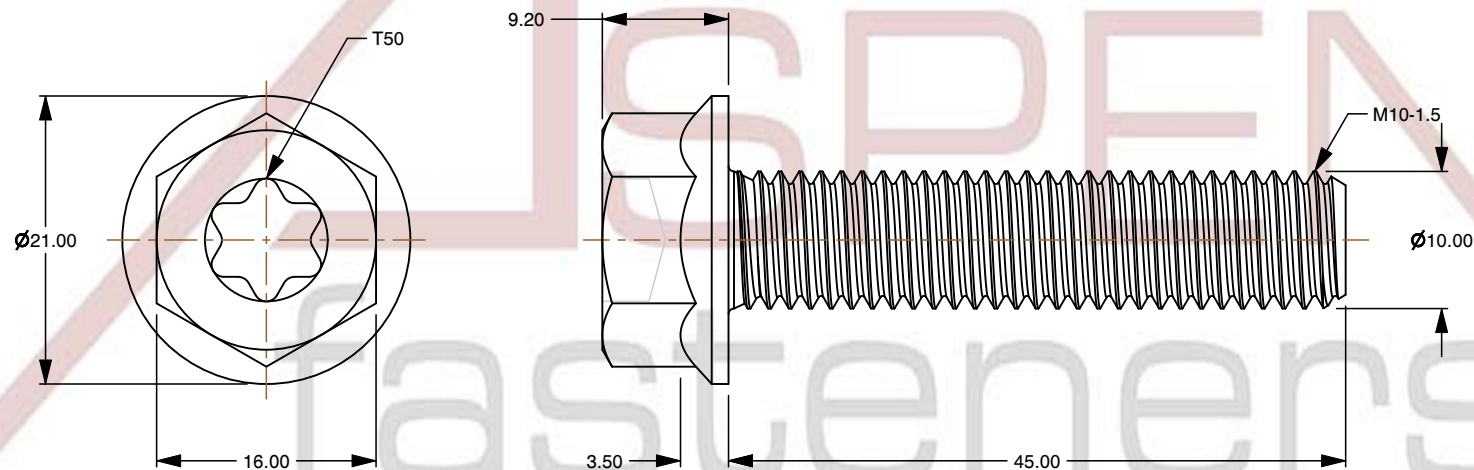
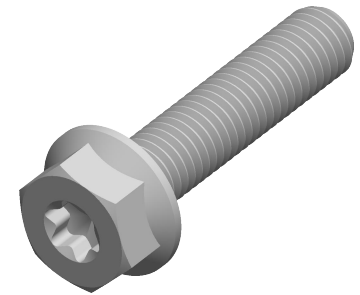


Specifications for: M10-1.5 X 45mm Hex Flange Bolts, Metric, 6Lobe Drive, Full Thread, Nylon 6/6

Notes:

- Category: Cap Screws
- Head Style: Hex Flange Head
- System of Measurement: Metric
- Drive Style: Hex 6Lobe Drive
- Pitch: Coarse Thread
- Thread Length: Full Thread
- Thread Direction: Right-Hand Thread
- Point: Chamfered Point
- Material: Thermoplastic
- Material Grade: Nylon 6/6
- Coating: Uncoated
- Coating Color: Natural



This file and any associated information and specifications are provided for reference and evaluation purposes only and is subject to change without notice. Aspen Fasteners Inc. makes no representations, warranties, or guarantees as to the appropriateness, accuracy, completeness, or suitability for any purpose of the file, information or specifications. You are solely responsible for the use of the file, information, or specifications.

This document is the property of Aspen Fasteners Inc. and the information it contains may not be reproduced, disclosed, or shared with any third party without the expressed written permission of Aspen Fasteners Inc.

SCALE 1.814

PRODUCT NAME
M10-1.5 X 45mm Hex Flange Bolts, Metric,
6Lobe Drive, Full Thread, Nylon 6/6

PART NUMBER: TP013-1015X45

UNIT
MILLIMETERS

ISSUED
2025-01-26

SHEET 1 of 1