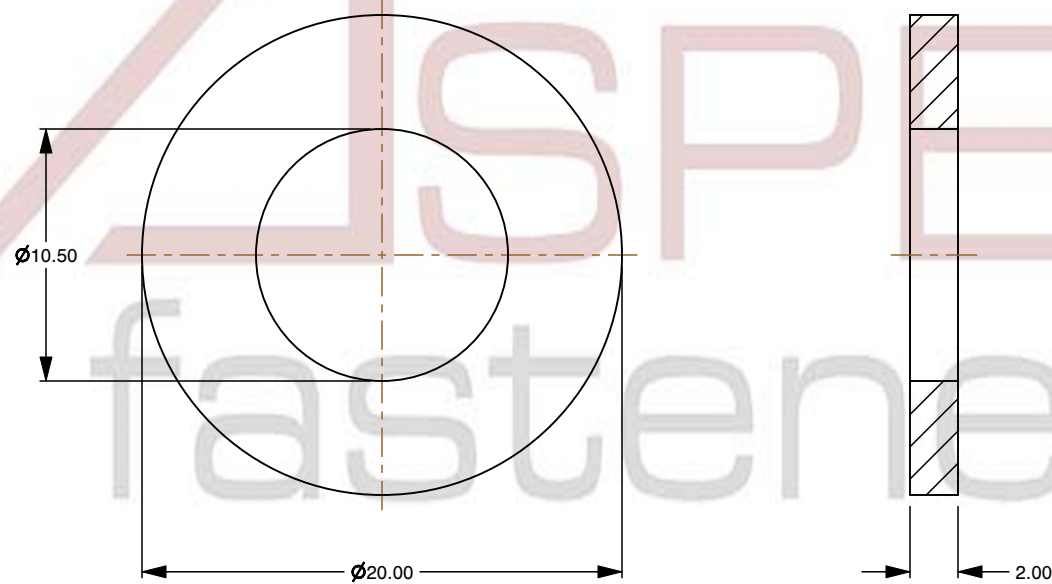
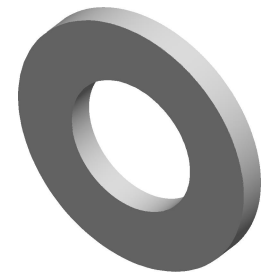



**Specifications for: M10 DIN 125 Type A / ISO 7089, Metric, Standard Flat Washers,  
Polyamide with 30pct Glass, Black**

Notes:

- Category: Standard Flat Washers
- Form and Design: Not Chamfered
- System of Measurement: Metric
- Material: Thermoplastic
- Material Grade: Polyamide 30 Percent Glass Filled
- Coating: Uncoated
- Coating Color: Black
- Standards and Specifications: DIN 125 Type A / ISO 7089



|   |  |  |   |                              |
|---|--|--|---|------------------------------|
| <br><a href="http://www.aspenfasteners.com">www.aspenfasteners.com</a> | <p>This file and any associated information and specifications are provided for reference and evaluation purposes only and is subject to change without notice. Aspen Fasteners Inc. makes no representations, warranties, or guarantees as to the appropriateness, accuracy, completeness, or suitability for any purpose of the file, information or specifications. You are solely responsible for the use of the file, information, or specifications.</p> | <p>This document is the property of Aspen Fasteners Inc. and the information it contains may not be reproduced, disclosed, or shared with any third party without the expressed written permission of Aspen Fasteners Inc.</p> | <p>PRODUCT NAME<br/>M10 DIN 125 Type A / ISO 7089,<br/>Metric, Standard Flat Washers,<br/>Polyamide with 30pct Glass, Black</p> | <p>UNIT<br/>MILLIMETERS</p>  |
|   |  |  | <p>PART NUMBER: TP046-10</p>  | <p>ISSUED<br/>2025-01-26</p> |
|   |  | <p>SCALE 3.175</p>   |   | <p>SHEET 1 of 1</p>          |