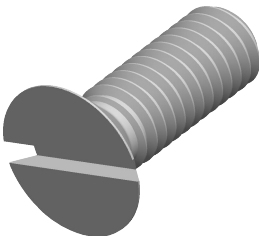


Specifications for: M6-1.0 X 17mm DIN 963 / ISO 2009, Metric, Machine Screws, Flat Head Slot Drive, Polyamide

Notes:



- Category: Machine Screws
- Head Style: Flat Countersunk Head
- System of Measurement: Metric
- Head Style Detail: 90 Degree Countersink
- Drive Style: Slotted Drive
- Thread Length: Full Thread
- Thread Direction: Right-Hand Thread
- Material: Thermoplastic
- Material Grade: Polyamide
- Coating: Uncoated
- Coating Color: Natural
- Standards and Specifications: DIN 963 / ISO 2009

