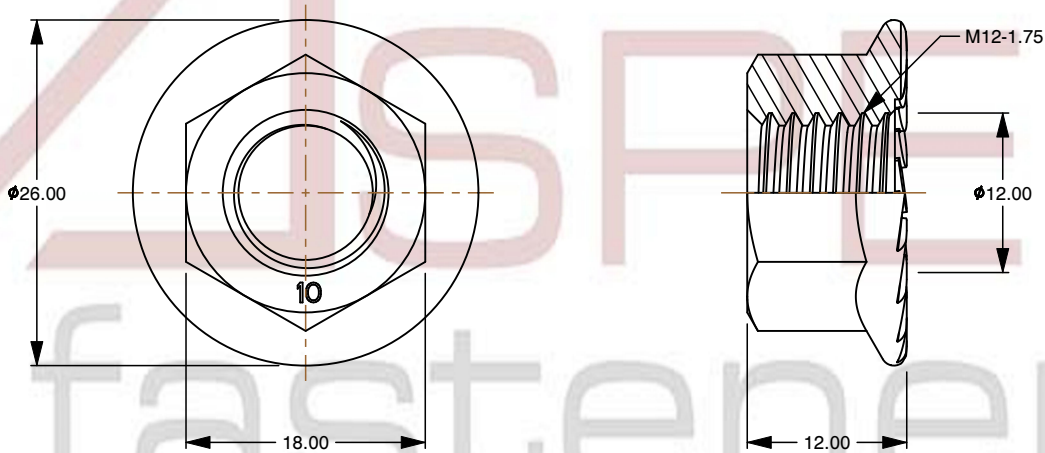
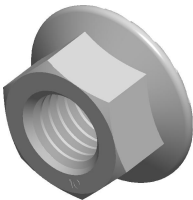



Notes :

- 1. Category: Hex Flange Nuts
- 2. System of Measurement: Metric
- 3. Form and Design: Locking Serrations
- 4. Drive Style: External Hex Drive
- 5. Thread Length: Full Thread
- 6. Thread Direction: Right-Hand Thread
- 7. Material: Steel
- 8. Material Grade: Class 10 Steel
- 9. Coating: Zinc Plated
- 10. Coating Color: Clear
- 11. Standards and Specifications: DIN 6923



 www.aspenfasteners.com	This file and any associated information and specifications are provided for reference and evaluation purposes only and is subject to change without notice. Aspen Fasteners Inc. makes no representations, warranties, or guarantees as to the appropriateness, accuracy, completeness, or suitability for any purpose of the file, information or specifications. You are solely responsible for the use of the file, information, or specifications.	This document is the property of Aspen Fasteners Inc. and the information it contains may not be reproduced, disclosed, or shared with any third party without the expressed written permission of Aspen Fasteners Inc.	PRODUCT NAME M12-1.75 DIN 6923, Metric, Hex Flange Nuts with Serrations, Class 10 Steel, Plain	UNIT METRIC
				ISSUED 2023-11-23
		SCALE 1.758	PART NUMBER: ME065-12175	SHEET 1 of 1