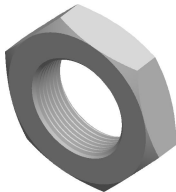
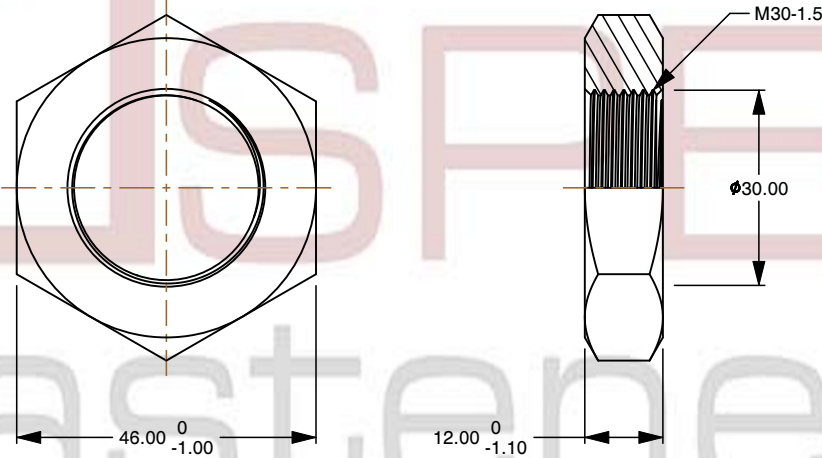



Notes :



- 1. Category: Hex Jam Thin Nuts
- 2. System of Measurement: Metric
- 3. Form and Design: Double Chamfered
- 4. Drive Style: External Hex Drive
- 5. Thread Length: Full Thread
- 6. Thread Direction: Right-Hand Thread
- 7. Material: Steel
- 8. Material Grade: Class 4 Steel
- 9. Coating: Uncoated
- 10. Standards and Specifications: DIN 936



 www.aspenfasteners.com	This file and any associated information and specifications are provided for reference and evaluation purposes only and is subject to change without notice. Aspen Fasteners Inc. makes no representations, warranties, or guarantees as to the appropriateness, accuracy, completeness, or suitability for any purpose of the file, information or specifications. You are solely responsible for the use of the file, information, or specifications.	This document is the property of Aspen Fasteners Inc. and the information it contains may not be reproduced, disclosed, or shared with any third party without the expressed written permission of Aspen Fasteners Inc.	PRODUCT NAME M30-1.5 DIN 936, Metric, Hex Jam Thin Nuts, Class 4 Steel, Plain	UNIT METRIC
				ISSUED 2023-11-23
		SCALE 0.861	PART NUMBER: ME336-3015	SHEET 1 of 1