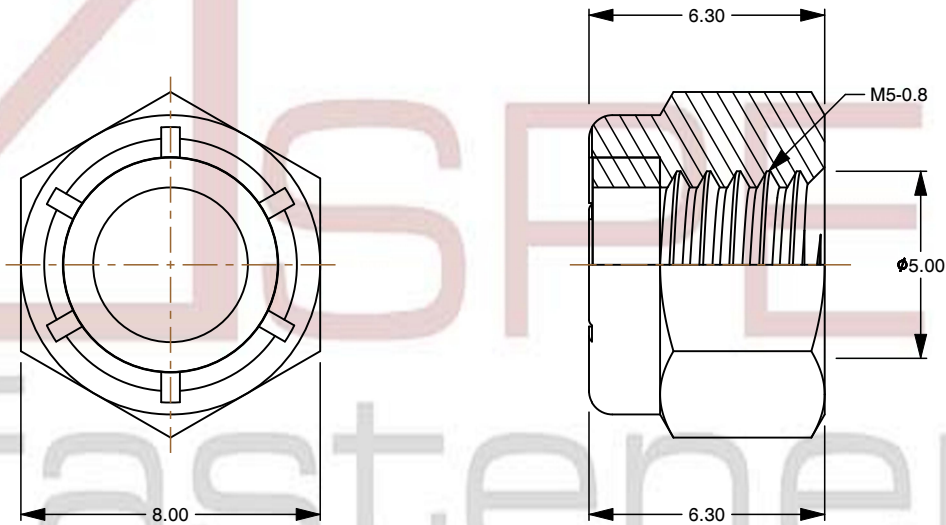
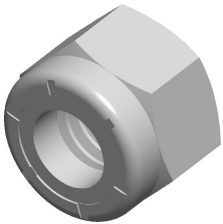



**Specifications for: M5-0.8 DIN 982, Metric, High Hex Nylon Insert Stop Lock Nuts,
A2 Stainless Steel**

Notes:

- Category: High Hex Nylon Insert Stop Lock Nuts
- Drive Style: External Hex Drive
- System of Measurement: Metric
- Thread Length: Full Thread
- Thread Direction: Right-Hand Thread
- Material: Stainless Steel
- Material Grade: A2 Stainless Steel
- Coating: Uncoated
- Standards and Specifications: DIN 982



 www.aspenfasteners.com	This file and any associated information and specifications are provided for reference and evaluation purposes only and is subject to change without notice. Aspen Fasteners Inc. makes no representations, warranties, or guarantees as to the appropriateness, accuracy, completeness, or suitability for any purpose of the file, information or specifications. You are solely responsible for the use of the file, information, or specifications.	This document is the property of Aspen Fasteners Inc. and the information it contains may not be reproduced, disclosed, or shared with any third party without the expressed written permission of Aspen Fasteners Inc.	PRODUCT NAME M5-0.8 DIN 982, Metric, High Hex Nylon Insert Stop Lock Nuts, A2 Stainless Steel	UNIT MILLIMETERS
				ISSUED 2025-01-26
		SCALE 4.949	PART NUMBER: ME562-508X63X8	SHEET 1 of 1