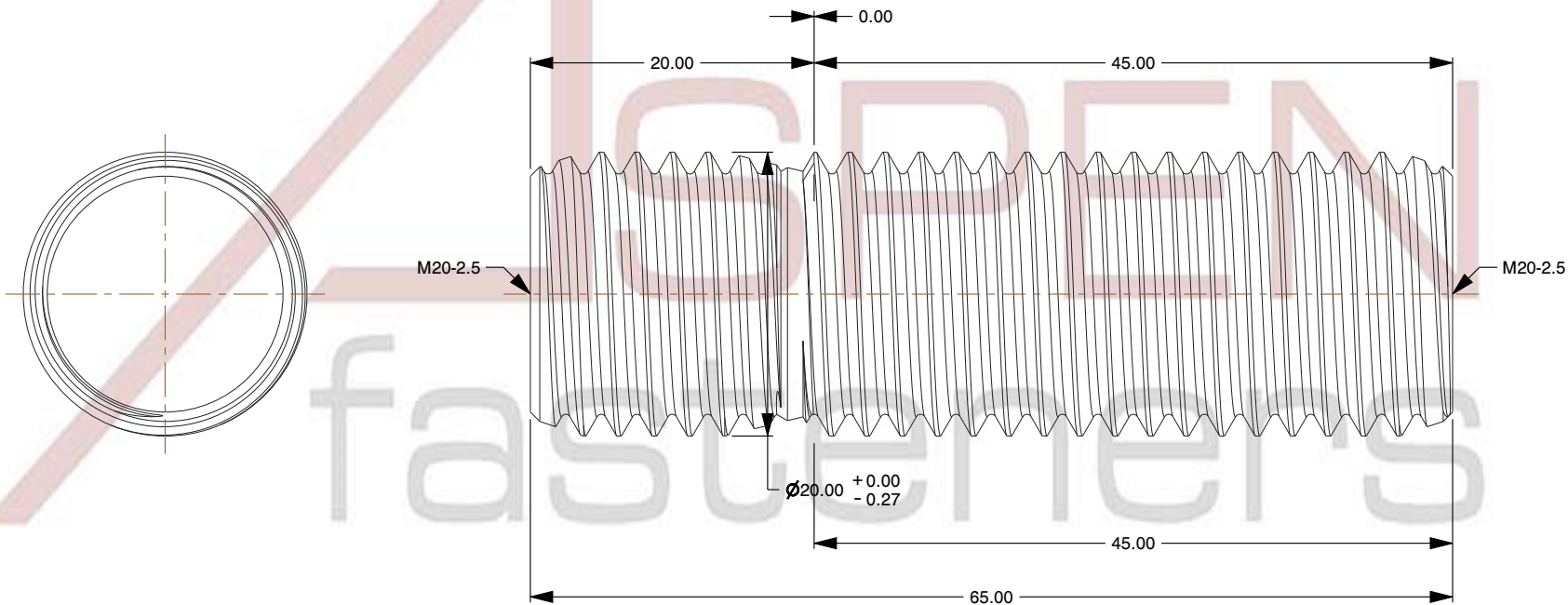
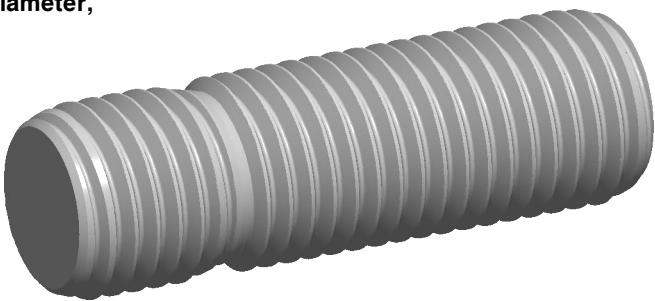



Specifications for: M20-2.5 X 45mm DIN 938, Metric, Studs,Double-Ended, Screw-in End 1.0 X Diameter, Class 5.8 Steel, Plain

- Notes:
- Category: Studs, Double-Ended
 - Form and Design: Screw-in End 1.0 X Diameter
 - System of Measurement: Metric
 - Thread Direction: Right-Hand Thread
 - Material: Steel
 - Material Grade: Class 5.8 Steel
 - Coating: Uncoated
 - Standards and Specifications: DIN 938



 www.aspenfasteners.com	This file and any associated information and specifications are provided for reference and evaluation purposes only and is subject to change without notice. Aspen Fasteners Inc. makes no representations, warranties, or guarantees as to the appropriateness, accuracy, completeness, or suitability for any purpose of the file, information or specifications. You are solely responsible for the use of the file, information, or specifications.	This document is the property of Aspen Fasteners Inc. and the information it contains may not be reproduced, disclosed, or shared with any third party without the expressed written permission of Aspen Fasteners Inc.	PRODUCT NAME M20-2.5 X 45mm DIN 938, Metric, Studs, Double-Ended, Screw-in End 1.0 X Diameter, Class 5.8 Steel, Plain	UNIT MILLIMETERS
				ISSUED 2025-01-26
		SCALE 0.079	PART NUMBER: ME387-2025X45	SHEET 1 of 1