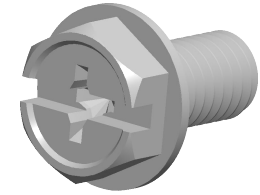


Specifications for: #10-32 X 3/8" Machine Screws, Grounding Screws, Hex Indented Washer Phillips/Slot Combo Drive, Full Thread, Steel, Green Zinc



Notes:

- Category: Machine Screws
- System of Measurement: Inch
- Head Style: Hex Indented Washer Head
- Drive Style: Cruciform/Slotted Recess Drive
- Drive Detail: Phillips Type H
- Thread Length: Full Thread
- Thread Direction: Right-Hand Thread
- Material: Steel
- Coating: Zinc Plated
- Coating Color: Green
- Origin: Origin Undefined
- Standards and Specifications: SAE J82

