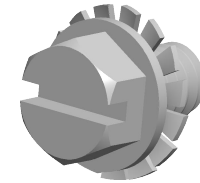


**Specifications for: 1/4"-20 X 3/8" SEMS External Tooth Washer Machine Screws, Hex Slotted Washer, Steel, Zinc Plated and Baked**



Notes:

- Category: Machine Screws
- System of Measurement: Inch
- Form and Design: SEMS Screws Pre-Assembled with a Captive Lock Washer
- Head Style: Hex Washer Head
- Head Style Detail: Free-Spinning External Tooth Lock Washer
- Drive Style: Hex Slotted Drive
- Thread Length: Full Thread
- Thread Direction: Right-Hand Thread
- Material: Steel
- Coating: Zinc Plated and Baked
- Coating Color: Clear
- Origin: Origin Undefined
- Standards and Specifications: ASME B18.13a and SAE J82

