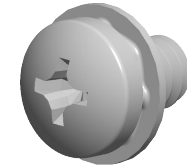


**Specifications for: #4-40 X 3/16" Square Cone SEMS Washer Machine Screws, Pan Phillips Drive, Stainless Steel, Washer Material 410 Stainless Steel**



**Notes:**

- Category: Machine Screws
- System of Measurement: Inch
- Form and Design: SEMS Screws Pre-Assembled with a Captive Lock Washer
- Head Style: Pan Head
- Head Style Detail: Free-Spinning 410 Stainless Steel Square Cone Lock Wash
- Drive Style: Cruciform Recess Drive
- Drive Detail: Phillips Type H
- Thread Length: Full Thread
- Thread Direction: Right-Hand Thread
- Material: Stainless Steel
- Material Grade: 18-8 Stainless Steel
- Coating: Uncoated
- Origin: Origin Undefined
- Standards and Specifications: ASME B18.13

