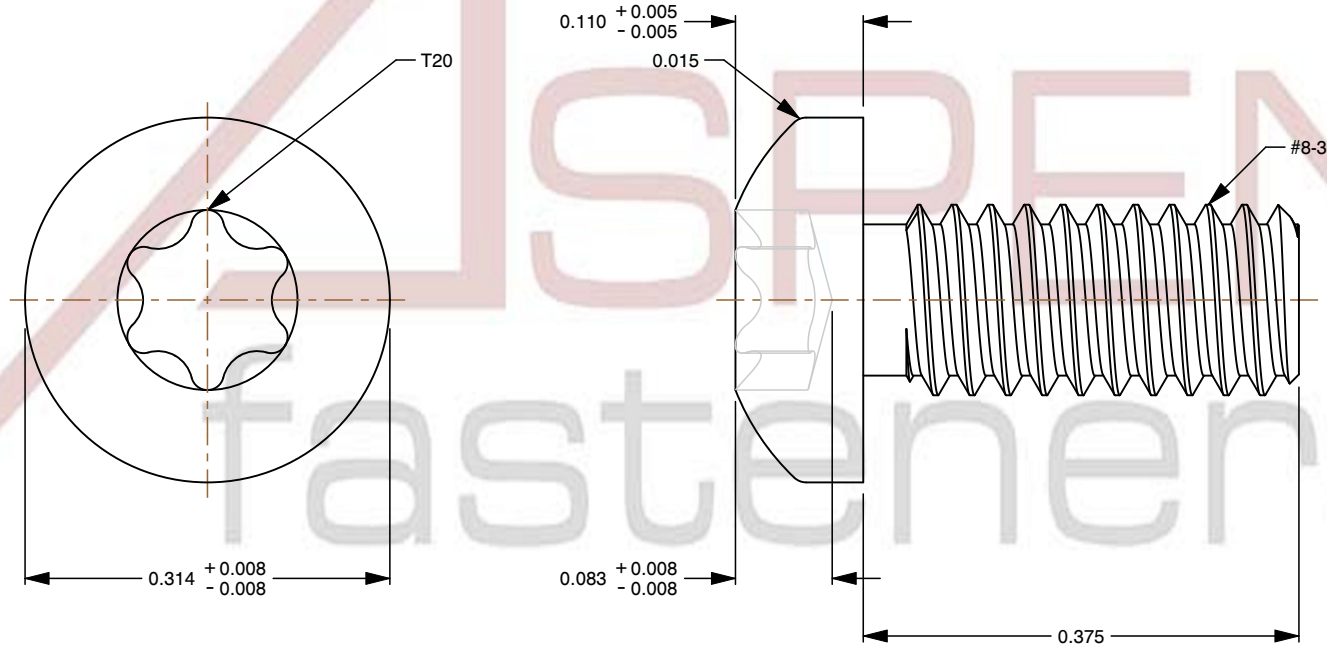
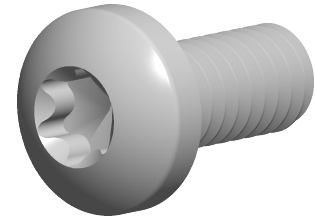


**Specifications for: #8-32 X 3/8" Machine Screws, Pan 6Lobe Torx(r) Drive, Steel, Black Oxide**

**Notes:**

- Category: Machine Screws
- System of Measurement: Inch
- Head Style: Pan Head
- Drive Style: 6Lobe Drive
- Drive Detail: Torx(r) Generic Alternative
- Thread Length: Full Thread
- Thread Direction: Right-Hand Thread
- Material: Steel
- Coating: Oxidized
- Coating Color: Black
- Origin: Origin Undefined
- Standards and Specifications: ASME B18.6.3 and SAE J82



This file and any associated information and specifications are provided for reference and evaluation purposes only and is subject to change without notice. Aspen Fasteners Inc. makes no representations, warranties, or guarantees as to the appropriateness, accuracy, completeness, or suitability for any purpose of the file, information or specifications. You are solely responsible for the use of the file, information, or specifications.

This document is the property of Aspen Fasteners Inc. and the information it contains may not be reproduced, disclosed, or shared with any third party without the expressed written permission of Aspen Fasteners Inc.

SCALE 6.051

PRODUCT NAME  
#8-32 X 3/8" Machine Screws, Pan 6Lobe  
Torx(r) Drive, Steel, Black Oxide

PART NUMBER: SC154-832X38

UNIT  
INCHES

ISSUED  
2026-06-03

SHEET 1 of 1