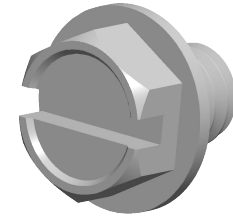


Specifications for: #8-32 X 3/16" Machine Screws, Hex Indented Washer, Slotted, Full Thread, Steel, Zinc Plated



Notes:

- Category: Machine Screws
- System of Measurement: Inch
- Head Style: Hex Indented Washer Head
- Drive Style: Hex Slotted Drive
- Thread Length: Full Thread
- Thread Direction: Right-Hand Thread
- Material: Steel
- Coating: Zinc Plated
- Coating Color: Clear
- Origin: Origin Undefined
- Standards and Specifications: ASME B18.6.3 and SAE J82

