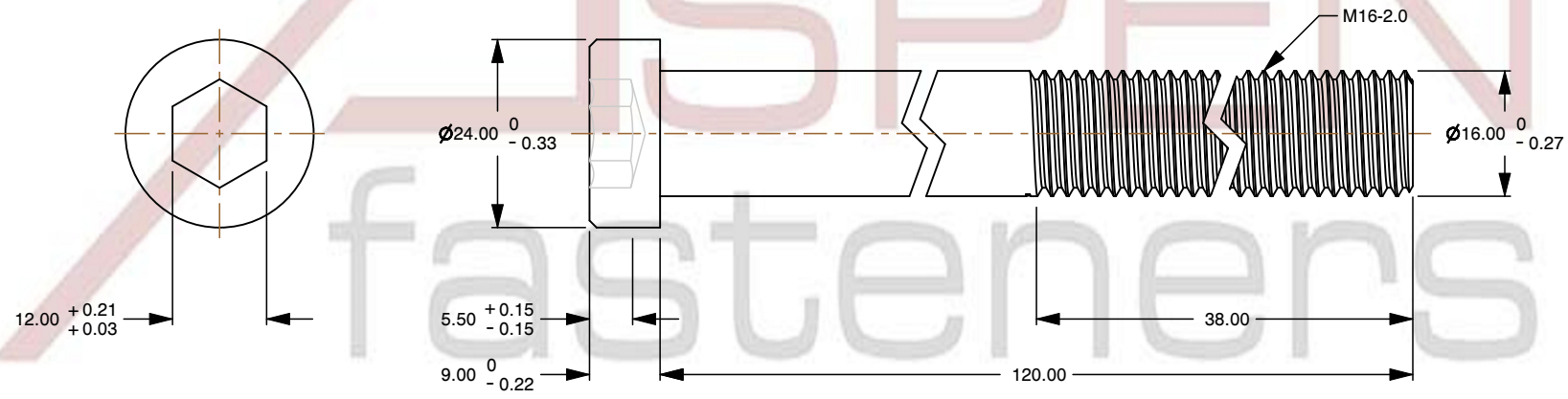
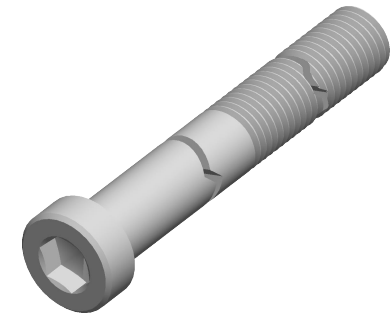


**Specifications for: M16-2.0 X 120mm DIN 7984, Metric, Low Head Hex Socket Cap Screws,
A4 Stainless Steel**

Notes:

- Category: Socket Head Cap Screws
- System of Measurement: Metric
- Head Style: Low Cylindrical Head
- Drive Style: Hex Socket Drive
- Thread Direction: Right-Hand Thread
- Material: Stainless Steel
- Material Grade: A4 Stainless Steel
- Coating: Uncoated
- Origin: Origin Undefined
- Standards and Specifications: DIN 7984



This file and any associated information and specifications are provided for reference and evaluation purposes only and is subject to change without notice. Aspen Fasteners Inc. makes no representations, warranties, or guarantees as to the appropriateness, accuracy, completeness, or suitability for any purpose of the file, information or specifications. You are solely responsible for the use of the file, information, or specifications.

This document is the property of Aspen Fasteners Inc. and the information it contains may not be reproduced, disclosed, or shared with any third party without the expressed written permission of Aspen Fasteners Inc.

PRODUCT NAME
M16-2.0 X 120mm DIN 7984, Metric,
Low Head Hex Socket Cap Screws,
A4 Stainless Steel

UNIT
MILLIMETERS

ISSUED
2025-09-05

SCALE 1.083

PART NUMBER: ME493-1620X120

SHEET 1 of 1