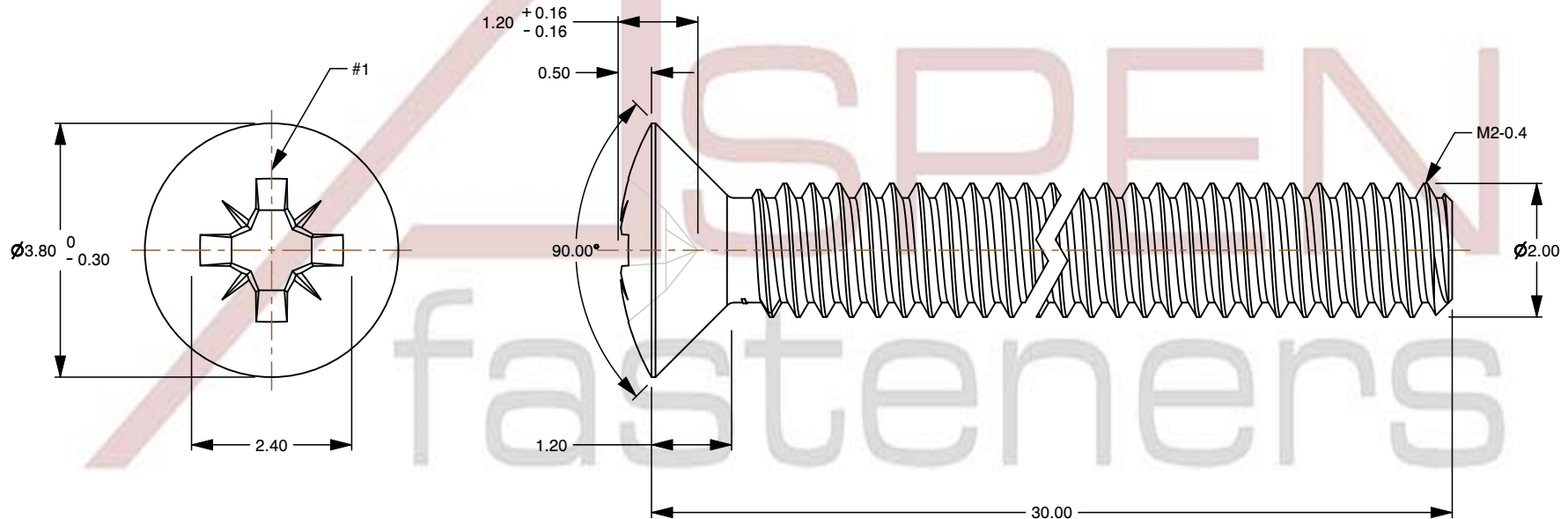
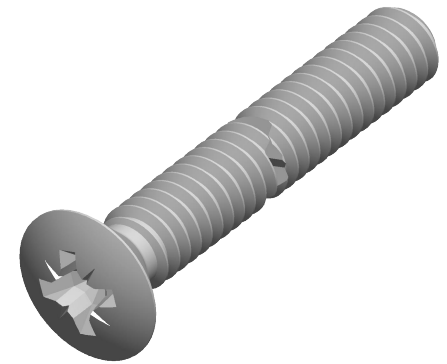


**Specifications for: M2-0.4 X 30mm DIN 966 / ISO 7047, Metric, Machine Screws, Oval Pozidriv Alternative Drive, Full Thread, A2 Stainless Steel**

**Notes:**

- Category: Machine Screws
- Head Style: Oval Countersunk Head
- System of Measurement: Metric
- Head Style Detail: 90 Degree Countersink
- Drive Style: Cruciform Recess Drive
- Drive Detail: Pozidriv Type Z
- Thread Length: Full Thread
- Thread Direction: Right-Hand Thread
- Material: Stainless Steel
- Material Grade: A2 Stainless Steel
- Coating: Uncoated
- Standards and Specifications: DIN 966 / ISO 7047



This file and any associated information and specifications are provided for reference and evaluation purposes only and is subject to change without notice. Aspen Fasteners Inc. makes no representations, warranties, or guarantees as to the appropriateness, accuracy, completeness, or suitability for any purpose of the file, information or specifications. You are solely responsible for the use of the file, information, or specifications.

This document is the property of Aspen Fasteners Inc. and the information it contains may not be reproduced, disclosed, or shared with any third party without the expressed written permission of Aspen Fasteners Inc.

SCALE 10.026

PRODUCT NAME  
M2-0.4 X 30mm DIN 966 / ISO 7047, Metric,  
Machine Screws, Oval Pozidriv Alternative Drive,  
Full Thread, A2 Stainless Steel

PART NUMBER: ME523-204X30

UNIT  
MILLIMETERS

ISSUED  
2025-02-20

SHEET 1 of 1