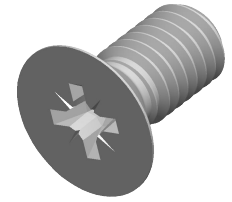


Specifications for: M3-0.5 X 6mm DIN 965 / ISO 7046, Metric, Machine Screws, Flat Pozidriv Alternative Drive, Full Thread, A4 Stainless Steel



Notes:

- Category: Machine Screws
- Head Style: Flat Countersunk Head
- System of Measurement: Metric
- Head Style Detail: 90 Degree Countersink
- Drive Style: Cruciform Recess Drive
- Drive Detail: Pozidriv Type Z
- Thread Length: Full Thread
- Thread Direction: Right-Hand Thread
- Material: Stainless Steel
- Material Grade: A4 Stainless Steel
- Coating: Uncoated
- Standards and Specifications: DIN 965 / ISO 7046

