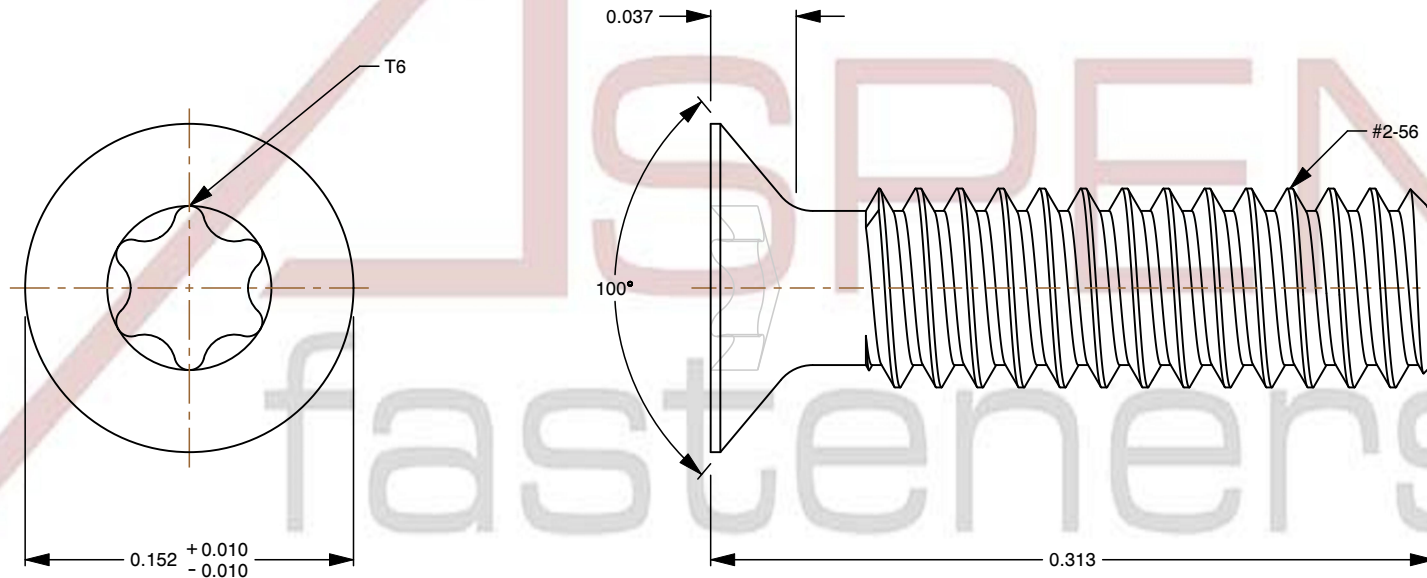
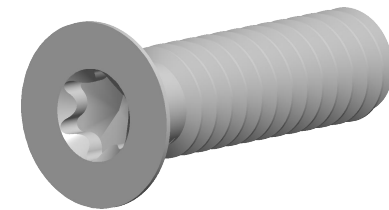


Specifications for: #2-56 X 5/16" Machine Screws, Flat Head 6Lobe Torx(r) Drive, 100 Degree Countersink, Stainless Steel

Notes:

- Category: Machine Screws
- System of Measurement: Inch
- Head Style: Flat Countersunk Head
- Head Style Detail: 100 Degree Countersink
- Drive Style: 6Lobe Drive
- Drive Detail: Torx(r) Generic Alternative
- Thread Length: Full Thread
- Thread Direction: Right-Hand Thread
- Material: Stainless Steel
- Material Grade: 18-8 Stainless Steel
- Coating: Uncoated
- Origin: Origin Undefined



This file and any associated information and specifications are provided for reference and evaluation purposes only and is subject to change without notice. Aspen Fasteners Inc. makes no representations, warranties, or guarantees as to the appropriateness, accuracy, completeness, or suitability for any purpose of the file, information or specifications. You are solely responsible for the use of the file, information, or specifications.

This document is the property of Aspen Fasteners Inc. and the information it contains may not be reproduced, disclosed, or shared with any third party without the expressed written permission of Aspen Fasteners Inc.

SCALE 12.043

PRODUCT NAME
#2-56 X 5/16" Machine Screws, Flat Head
6Lobe Torx(r) Drive, 100 Degree
Countersink, Stainless Steel

PART NUMBER: ST076-N256X516

UNIT
INCHES

ISSUED
2026-06-03

SHEET 1 of 1