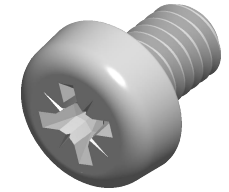


**Specifications for: M4-0.7 X 6mm DIN 7985A / ISO 7045, Metric, Machine Screws, Pan Pozidriv Alternative Drive, Full Thread, A2 Stainless Steel**



Notes:

- Category: Machine Screws
- Head Style: Pan Head
- System of Measurement: Metric
- Drive Style: Cruciform Recess Drive
- Drive Detail: Pozidriv Type Z
- Thread Length: Full Thread
- Thread Direction: Right-Hand Thread
- Material: Stainless Steel
- Material Grade: A2 Stainless Steel
- Coating: Uncoated
- Standards and Specifications: DIN 7985A / ISO 7045

