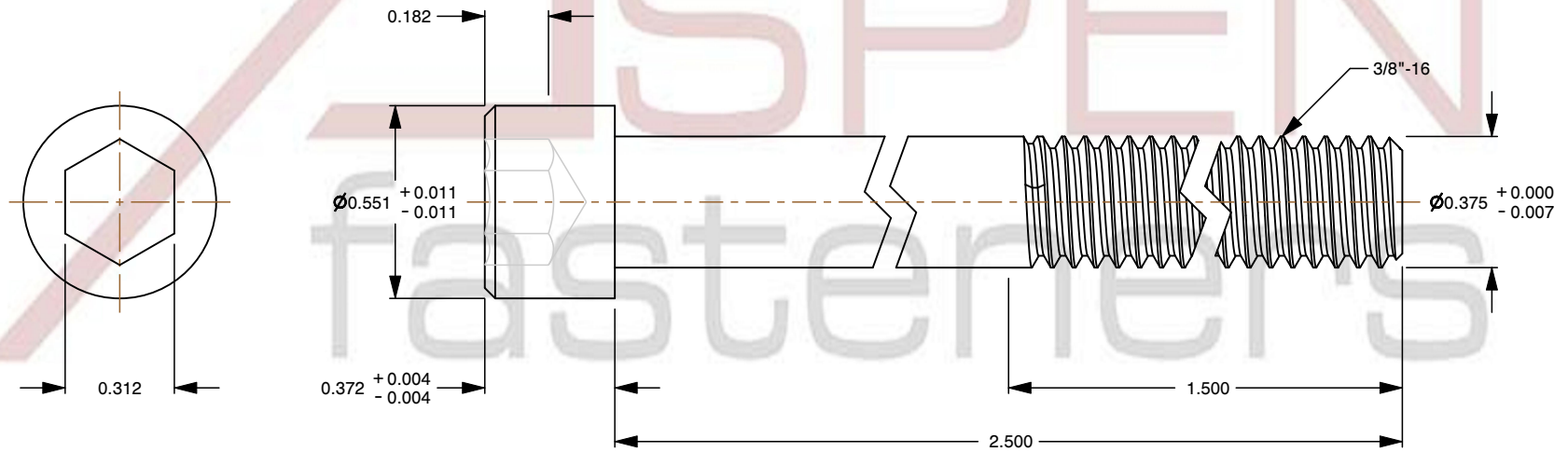
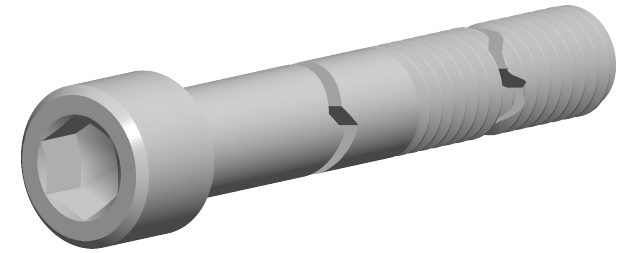


**Specifications for: 3/8"-16 X 2-1/2" Hex Socket Head Cap Screws, Alloy Steel,  
Yellow Cadmium Plated, MS16997, DFARS**

Notes:

- Category: Socket Head Cap Screws
- System of Measurement: Inch
- Head Style: Cylindrical Head
- Drive Style: Hex Socket Drive
- Thread Direction: Right-Hand Thread
- Material: Steel
- Material Grade: Alloy Steel
- Material Processes: Heat Treated
- Coating: Cadmium Plated
- Coating Color: Yellow
- Origin: Made in U.S.A.
- Standards and Specifications: MS16997, DFARS



This file and any associated information and specifications are provided for reference and evaluation purposes only and is subject to change without notice. Aspen Fasteners Inc. makes no representations, warranties, or guarantees as to the appropriateness, accuracy, completeness, or suitability for any purpose of the file, information or specifications. You are solely responsible for the use of the file, information, or specifications.

This document is the property of Aspen Fasteners Inc. and the information it contains may not be reproduced, disclosed, or shared with any third party without the expressed written permission of Aspen Fasteners Inc.

SCALE 1.954

PRODUCT NAME  
3/8"-16 X 2-1/2" Hex Socket  
Head Cap Screws, Alloy Steel,  
Yellow Cadmium Plated,  
MS16997, DFARS

PART NUMBER: MI002-3816X212

UNIT  
INCHES

ISSUED  
2026-01-22

SHEET 1 of 1