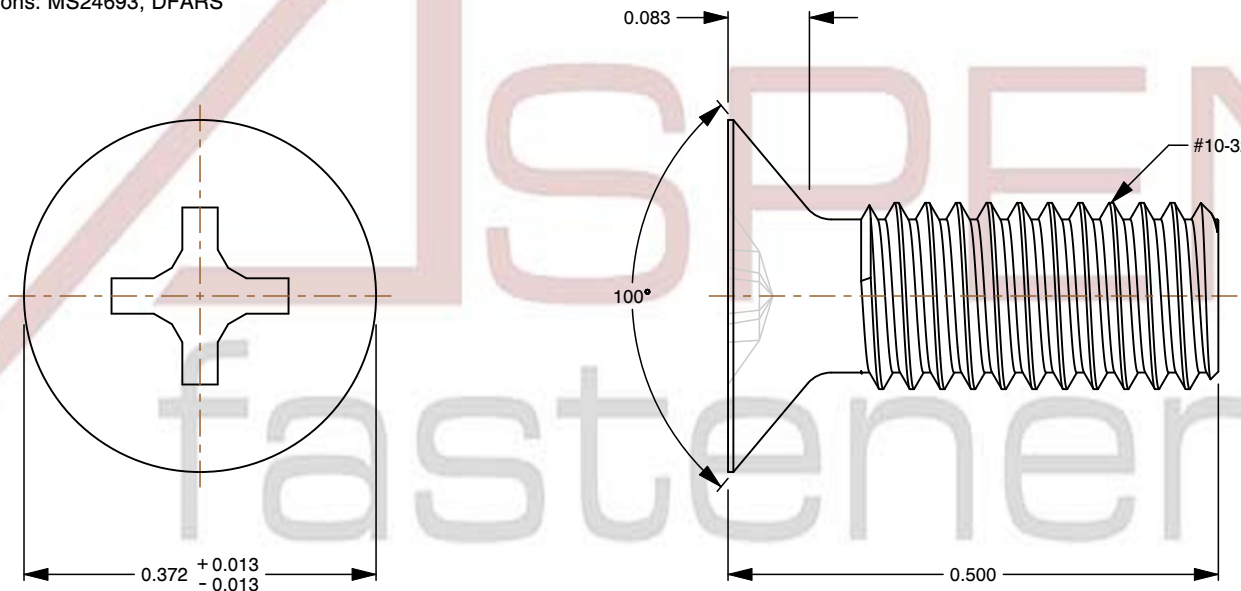
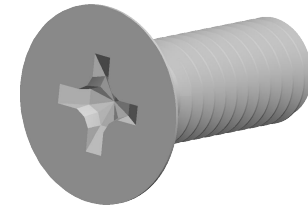


Specifications for: #10-32 X 1/2" Machine Screws, 100 Degree Flat Head Phillips Drive, Steel, Yellow Cadmium Plating, MS24693, DFARS

Notes:

- Category: Machine Screws
- System of Measurement: Inch
- Head Style: Flat Countersunk Head
- Head Style Detail: 100 Degree Countersink
- Drive Style: Cruciform Recess Drive
- Drive Detail: Phillips Type H
- Thread Length: Full Thread
- Thread Direction: Right-Hand Thread
- Material: Steel
- Coating: Cadmium Plated
- Coating Color: Yellow
- Origin: Made in U.S.A.
- Standards and Specifications: MS24693, DFARS



This file and any associated information and specifications are provided for reference and evaluation purposes only and is subject to change without notice. Aspen Fasteners Inc. makes no representations, warranties, or guarantees as to the appropriateness, accuracy, completeness, or suitability for any purpose of the file, information or specifications. You are solely responsible for the use of the file, information, or specifications.

This document is the property of Aspen Fasteners Inc. and the information it contains may not be reproduced, disclosed, or shared with any third party without the expressed written permission of Aspen Fasteners Inc.

SCALE 5.108

PRODUCT NAME
#10-32 X 1/2" Machine Screws, 100 Degree Flat Head Phillips Drive, Steel, Yellow Cadmium Plating, MS24693, DFARS

PART NUMBER: MI025-1032X12

UNIT
INCHES

ISSUED
2026-06-03

SHEET 1 of 1