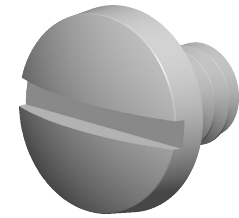


Specifications for: #10-24 X 1/4" Machine Screws, Grounding Screws, Binding Head Slot Drive, Full Thread, Steel, Green Zinc



Notes:

- Category: Machine Screws
- System of Measurement: Inch
- Head Style: Binding Undercut Head
- Drive Style: Slotted Drive
- Thread Length: Full Thread
- Thread Direction: Right-Hand Thread
- Material: Steel
- Coating: Zinc Plated
- Coating Color: Green
- Origin: Origin Undefined
- Standards and Specifications: ASME B18.6.3 and SAE J82

