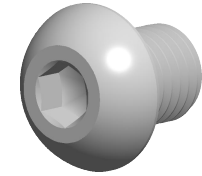


**Specifications for: 5/16"-24 X 3/8" Button Head Hex Socket Cap Screws,
Fine Thread, Alloy Steel, Made in U.S.A.**



Notes:

- Category: Socket Head Cap Screws
- System of Measurement: Inch
- Head Style: Button Head
- Drive Style: Hex Socket Drive
- Pitch: Fine Thread
- Thread Length: Full Thread
- Thread Direction: Right-Hand Thread
- Material: Steel
- Material Grade: Alloy Steel
- Coating: Uncoated
- Origin: Made in U.S.A.
- Standards and Specifications: ASME B18.3

