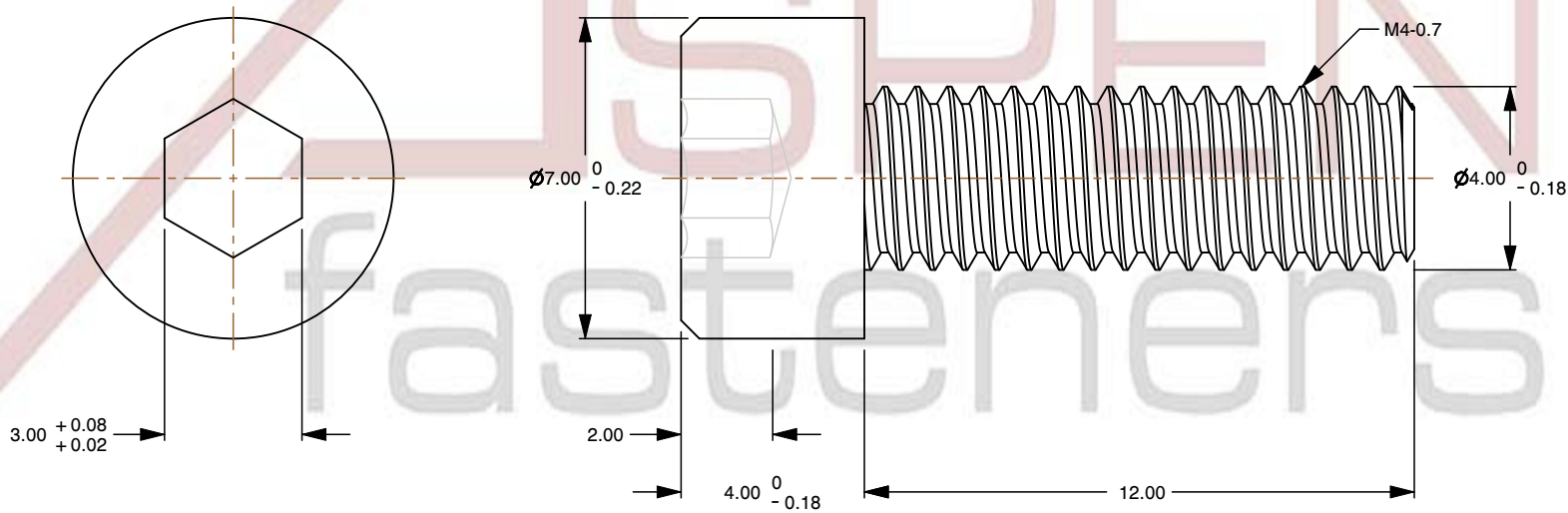
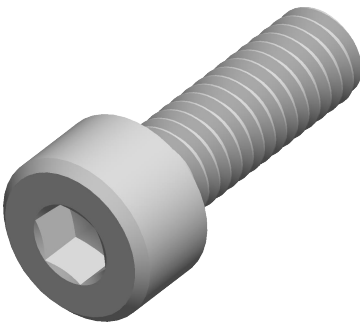



**Specifications for: M4-0.7 X 12mm ISO 4762, Metric, Hex Socket Head Cap Screws,
A2 Stainless Steel, Holo-Krome**

Notes:

- Category: Socket Head Cap Screws
- System of Measurement: Metric
- Head Style: Cylindrical Head
- Drive Style: Hex Socket Drive
- Threading: Thread Class ANSI B1.13M
- Thread Direction: Right-Hand Thread
- Material: Stainless Steel
- Material Grade: A2 Stainless Steel
- Material Processes: Passivated
- Coating: Uncoated
- Origin: Made in U.S.A.
- Standards and Specifications: ISO 4762



 www.aspenfasteners.com	This file and any associated information and specifications are provided for reference and evaluation purposes only and is subject to change without notice. Aspen Fasteners Inc. makes no representations, warranties, or guarantees as to the appropriateness, accuracy, completeness, or suitability for any purpose of the file, information or specifications. You are solely responsible for the use of the file, information, or specifications.	This document is the property of Aspen Fasteners Inc. and the information it contains may not be reproduced, disclosed, or shared with any third party without the expressed written permission of Aspen Fasteners Inc.	PRODUCT NAME M4-0.7 X 12mm ISO 4762, Metric, Hex Socket Head Cap Screws, A2 Stainless Steel, Holo-Krome	UNIT MILLIMETERS
				ISSUED 2025-09-05
		SCALE 6.074	PART NUMBER: HK004-407X12X3	SHEET 1 of 1