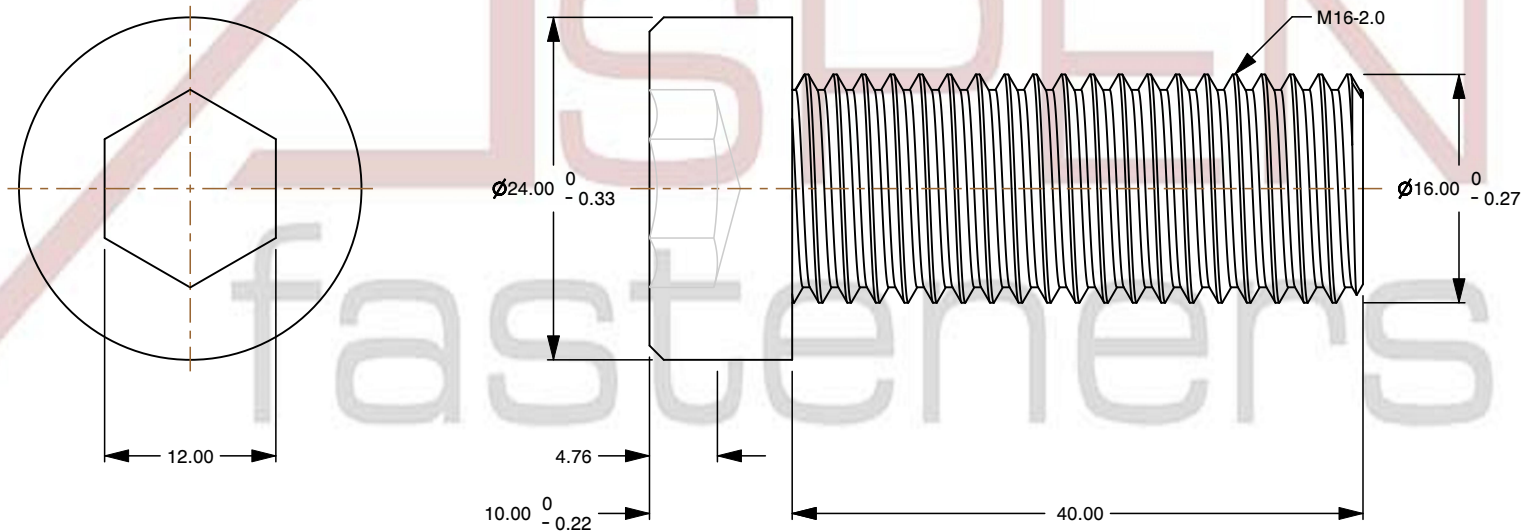
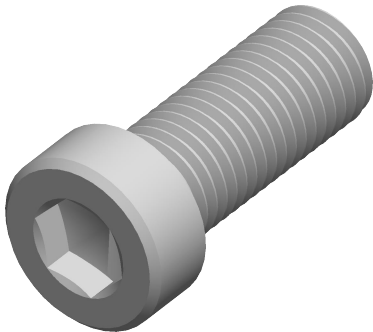



Specifications for: M16-2.0 X 40mm Low Head Hex Socket Cap Screws, Metric, Class 10.9
Steel, Black Oxide, Holo-Krome

Notes:

- Category: Socket Head Cap Screws
- System of Measurement: Metric
- Head Style: Low Cylindrical Head
- Drive Style: Hex Socket Drive
- Threading: Thread Class ANSI B1.13M
- Thread Direction: Right-Hand Thread
- Material: Steel
- Material Grade: Class 10.9 Steel
- Material Processes: Heat Treated
- Coating: Oxidized
- Coating Color: Black
- Origin: Made in U.S.A.



 www.aspenfasteners.com	This file and any associated information and specifications are provided for reference and evaluation purposes only and is subject to change without notice. Aspen Fasteners Inc. makes no representations, warranties, or guarantees as to the appropriateness, accuracy, completeness, or suitability for any purpose of the file, information or specifications. You are solely responsible for the use of the file, information, or specifications.	This document is the property of Aspen Fasteners Inc. and the information it contains may not be reproduced, disclosed, or shared with any third party without the expressed written permission of Aspen Fasteners Inc.	PRODUCT NAME M16-2.0 X 40mm Low Head Hex Socket Cap Screws, Metric, Class 10.9 Steel, Black Oxide, Holo-Krome	UNIT MILLIMETERS
				ISSUED 2025-09-05
		SCALE 1.888	PART NUMBER: HK007-1620X40X12	SHEET 1 of 1