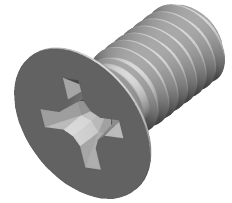


**Specifications for: M6-1.0 X 12mm DIN 965 / ISO 7046, Machine Screws, Metric, Flat Phillips Drive, Full Thread, Class 4.8 Steel, Black Oxide**



**Notes:**

- Category: Machine Screws
- Head Style: Flat Countersunk Head
- System of Measurement: Metric
- Head Style Detail: 90 Degree Countersink
- Drive Style: Cruciform Recess Drive
- Drive Detail: Phillips Type H
- Thread Length: Full Thread
- Thread Direction: Right-Hand Thread
- Material: Steel
- Material Grade: Class 4.8 Steel
- Coating: Oxidized
- Coating Color: Black
- Standards and Specifications: DIN 965 / ISO 7046

