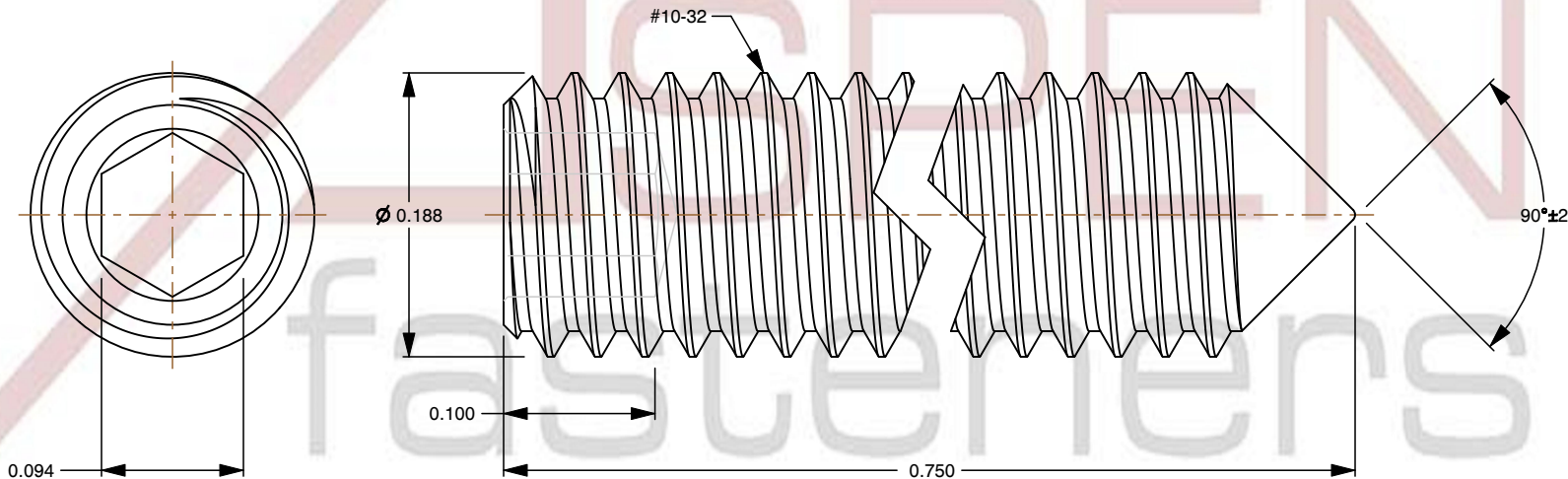
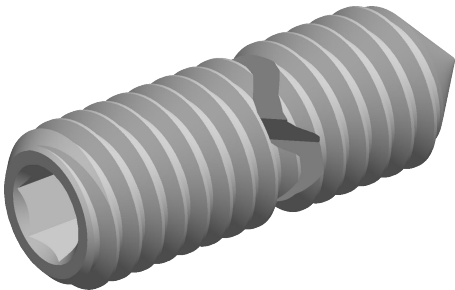



Specifications for: #10-32 X 3/4" Hex Socket Set Screws, Cone Point, Full Thread, Stainless Steel

- Notes:
- Category: Set Screws
 - System of Measurement: Inch
 - Head Style: Headless
 - Drive Style: Hex Socket Drive
 - Thread Length: Full Thread
 - Thread Direction: Right-Hand Thread
 - Point: Cone Point
 - Material: Stainless Steel
 - Material Grade: 18-8 Stainless Steel
 - Coating: Uncoated
 - Origin: Origin Undefined



 www.aspenfasteners.com	This file and any associated information and specifications are provided for reference and evaluation purposes only and is subject to change without notice. Aspen Fasteners Inc. makes no representations, warranties, or guarantees as to the appropriateness, accuracy, completeness, or suitability for any purpose of the file, information or specifications. You are solely responsible for the use of the file, information, or specifications.	This document is the property of Aspen Fasteners Inc. and the information it contains may not be reproduced, disclosed, or shared with any third party without the expressed written permission of Aspen Fasteners Inc.	PRODUCT NAME #10-32 X 3/4" Hex Socket Set Screws, Cone Point, Full Thread, Stainless Steel	UNIT INCHES
			PART NUMBER: ST357-1032X34	ISSUED 2025-06-25 SHEET 1 of 1