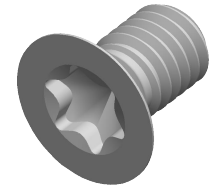


**Specifications for: M6-1.0 X 10mm DIN 965 / ISO 7046, Metric, Machine Screws, Flat Head 6Lobe  
Torx(r) Drive, Steel, Zinc Plated**



**Notes:**

- Category: Machine Screws
- Head Style: Flat Countersunk Head
- System of Measurement: Metric
- Head Style Detail: 90 Degree Countersink
- Drive Style: 6Lobe Drive
- Drive Detail: Torx(r) Generic Alternative
- Thread Length: Full Thread
- Thread Direction: Right-Hand Thread
- Material: Steel
- Material Grade: Class 4.8 Steel
- Coating: Zinc Plated
- Coating Color: Clear
- Standards and Specifications: DIN 965 / ISO 7046

