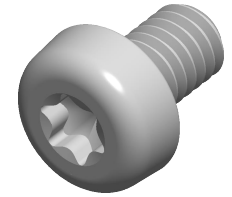


Specifications for: M2.5-0.45 X 4mm DIN 7985A / ISO 7045, Metric, Machine Screws, Pan 6Lobe Torx(r) Drive, Steel, Zinc Plated



Notes:

- Category: Machine Screws
- Head Style: Pan Head
- System of Measurement: Metric
- Drive Style: 6Lobe Drive
- Drive Detail: Torx(r) Generic Alternative
- Thread Length: Full Thread
- Thread Direction: Right-Hand Thread
- Material: Steel
- Material Grade: Class 4.8 Steel
- Coating: Zinc Plated
- Coating Color: Clear
- Standards and Specifications: DIN 7985A / ISO 7045

