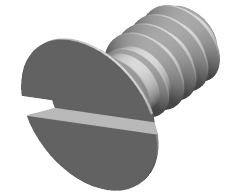


**Specifications for: M1.6-0.35 X 3mm DIN 963 / ISO 2009, Metric, Machine Screws, Flat Slot Drive, Full Thread, Class 4.8 Steel, Zinc Plated**



**Notes:**

- Category: Machine Screws
- Head Style: Flat Countersunk Head
- System of Measurement: Metric
- Head Style Detail: 90 Degree Countersink
- Drive Style: Slotted Drive
- Thread Length: Full Thread
- Thread Direction: Right-Hand Thread
- Material: Steel
- Material Grade: Class 4.8 Steel
- Coating: Zinc Plated
- Coating Color: Clear
- Standards and Specifications: DIN 963 / ISO 2009

