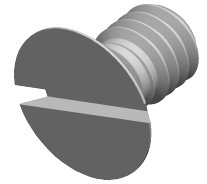


Specifications for: M2.5-0.45 X 4mm DIN 963 / ISO 2009, Metric, Machine Screws, Flat Slot Drive, Full Thread, Class 4.8 Steel, Zinc Plated



Notes:

- Category: Machine Screws
- Head Style: Flat Countersunk Head
- System of Measurement: Metric
- Head Style Detail: 90 Degree Countersink
- Drive Style: Slotted Drive
- Thread Length: Full Thread
- Thread Direction: Right-Hand Thread
- Material: Steel
- Material Grade: Class 4.8 Steel
- Coating: Zinc Plated
- Coating Color: Clear
- Standards and Specifications: DIN 963 / ISO 2009

