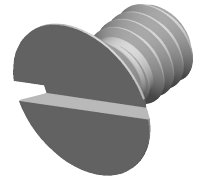


**Specifications for: M4-0.7 X 6mm DIN 963 / ISO 2009, Metric, Machine Screws, Flat Slot Drive, Full Thread, Nylon 6/6**



**Notes:**

- Category: Machine Screws
- Head Style: Flat Countersunk Head
- System of Measurement: Metric
- Head Style Detail: 90 Degree Countersink
- Drive Style: Slotted Drive
- Thread Length: Full Thread
- Thread Direction: Right-Hand Thread
- Material: Nylon
- Material Grade: Type 6/6
- Coating: Uncoated
- Standards and Specifications: DIN 963 / ISO 2009

