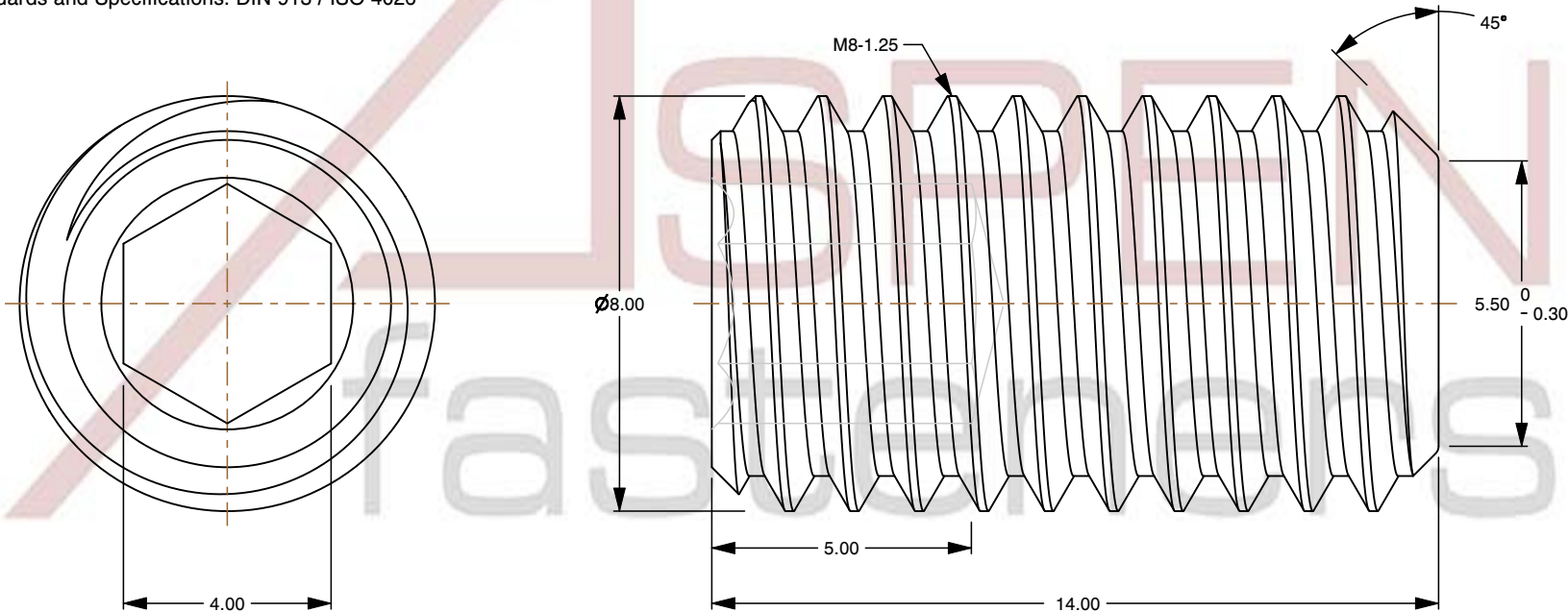
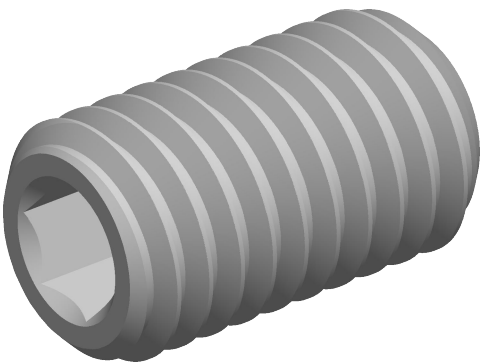



Specifications for: M8-1.25 X 14mm DIN 913 / ISO 4026, Metric, Hex Socket Set Screws, Flat Point, Coarse Thread, Class 45H Steel, Black

- Notes:
- Category: Set Screws
 - System of Measurement: Metric
 - Head Style: Headless
 - Drive Style: Hex Socket Drive
 - Thread Length: Full Thread
 - Thread Direction: Right-Hand Thread
 - Point: Flat Point
 - Material: Steel
 - Material Grade: Class 45H Steel
 - Material Processes: Quenched and Tempered
 - Coating: Uncoated
 - Origin: Origin Undefined
 - Standards and Specifications: DIN 913 / ISO 4026



 www.aspenfasteners.com	This file and any associated information and specifications are provided for reference and evaluation purposes only and is subject to change without notice. Aspen Fasteners Inc. makes no representations, warranties, or guarantees as to the appropriateness, accuracy, completeness, or suitability for any purpose of the file, information or specifications. You are solely responsible for the use of the file, information, or specifications.	This document is the property of Aspen Fasteners Inc. and the information it contains may not be reproduced, disclosed, or shared with any third party without the expressed written permission of Aspen Fasteners Inc.	PRODUCT NAME M8-1.25 X 14mm DIN 913 / ISO 4026, Metric, Hex Socket Set Screws, Flat Point, Coarse Thread, Class 45H Steel, Black	UNIT MILLIMETERS
				ISSUED 2025-01-09
		SCALE 7:144	PART NUMBER: ME261-8125X14	SHEET 1 of 1