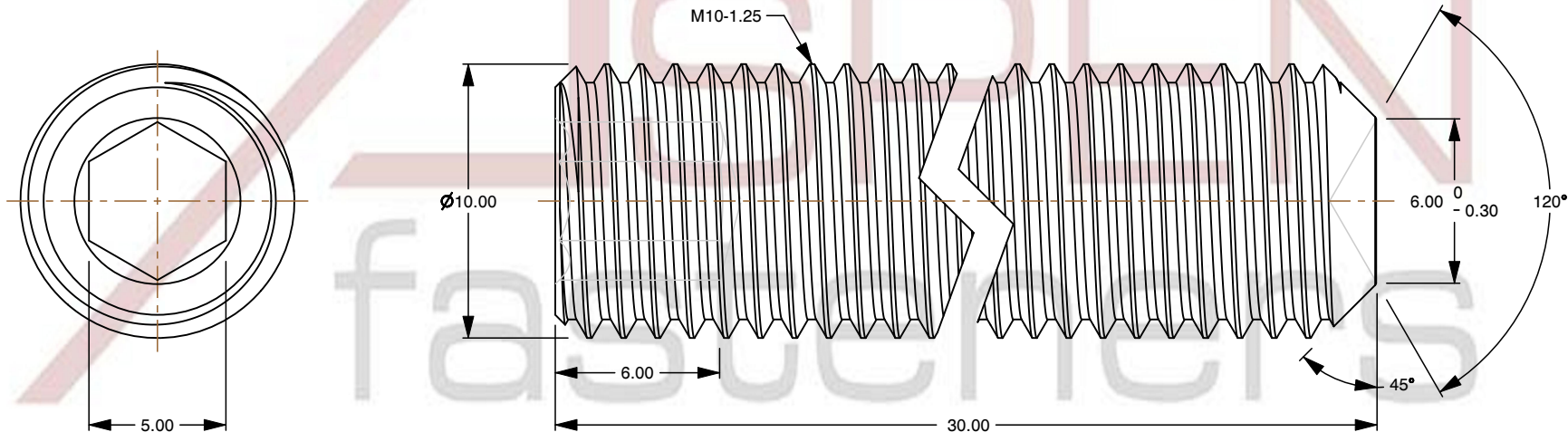
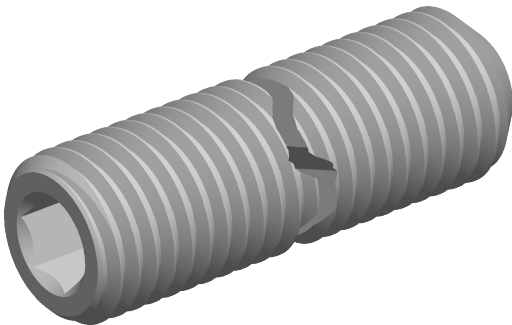



Specifications for: M10-1.25 X 30mm DIN 916 / ISO 4029, Metric, Hex Socket Set Screws, Cup Point, Fine Thread, Class 45H Steel, Black

Notes:

- Category: Set Screws
- System of Measurement: Metric
- Head Style: Headless
- Drive Style: Hex Socket Drive
- Thread Length: Full Thread
- Thread Direction: Right-Hand Thread
- Point: Cup Point
- Material: Steel
- Material Grade: Class 45H Steel
- Material Processes: Quenched and Tempered
- Coating: Uncoated
- Origin: Origin Undefined
- Standards and Specifications: DIN 916 / ISO 4029



 www.aspenfasteners.com	This file and any associated information and specifications are provided for reference and evaluation purposes only and is subject to change without notice. Aspen Fasteners Inc. makes no representations, warranties, or guarantees as to the appropriateness, accuracy, completeness, or suitability for any purpose of the file, information or specifications. You are solely responsible for the use of the file, information, or specifications.	This document is the property of Aspen Fasteners Inc. and the information it contains may not be reproduced, disclosed, or shared with any third party without the expressed written permission of Aspen Fasteners Inc.	PRODUCT NAME M10-1.25 X 30mm DIN 916 / ISO 4029, Metric, Hex Socket Set Screws, Cup Point, Fine Thread, Class 45H Steel, Black	UNIT MILLIMETERS
				ISSUED 2025-01-09
		SCALE 4.001	PART NUMBER: ME273-10125X30	SHEET 1 of 1