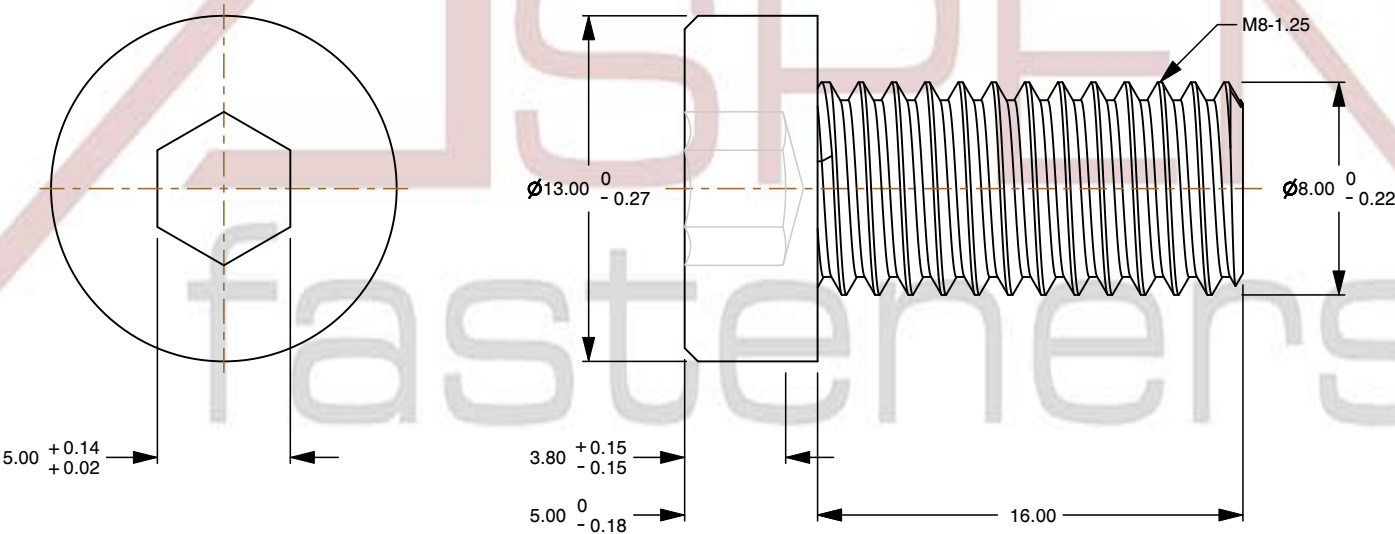
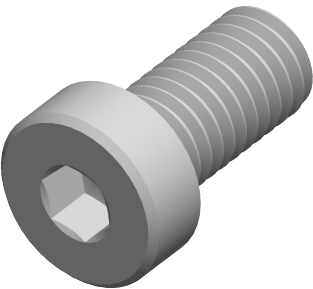



Specifications for: M8-1.25 X 16mm DIN 7984, Metric, Low Head Hex Socket Cap Screws,  
Class 8.8 Steel, Plain

Notes:

- Category: Socket Head Cap Screws
- System of Measurement: Metric
- Head Style: Low Cylindrical Head
- Drive Style: Hex Socket Drive
- Thread Direction: Right-Hand Thread
- Material: Steel
- Material Grade: Class 8.8 Steel
- Coating: Uncoated
- Origin: Origin Undefined
- Standards and Specifications: DIN 7984



 www.aspenfasteners.com	This file and any associated information and specifications are provided for reference and evaluation purposes only and is subject to change without notice. Aspen Fasteners Inc. makes no representations, warranties, or guarantees as to the appropriateness, accuracy, completeness, or suitability for any purpose of the file, information or specifications. You are solely responsible for the use of the file, information, or specifications.	This document is the property of Aspen Fasteners Inc. and the information it contains may not be reproduced, disclosed, or shared with any third party without the expressed written permission of Aspen Fasteners Inc.	PRODUCT NAME M8-1.25 X 16mm DIN 7984, Metric, Low Head Hex Socket Cap Screws, Class 8.8 Steel, Plain	UNIT MILLIMETERS
				ISSUED 2025-09-05
		SCALE 3.517	PART NUMBER: ME339-8125X16	SHEET 1 of 1