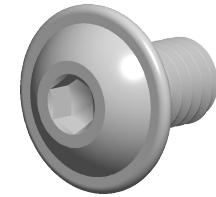


**Specifications for: 5/16"-18 X 1/2" Flanged Button Head Hex Socket Cap Screws,
Full Thread, Stainless Steel**



Notes:

- Category: Socket Head Cap Screws
- System of Measurement: Inch
- Head Style: Button Head with Flange
- Drive Style: Hex Socket Drive
- Thread Length: Full Thread
- Thread Direction: Right-Hand Thread
- Material: Stainless Steel
- Material Grade: 18-8 Stainless Steel
- Coating: Uncoated
- Origin: Origin Undefined

