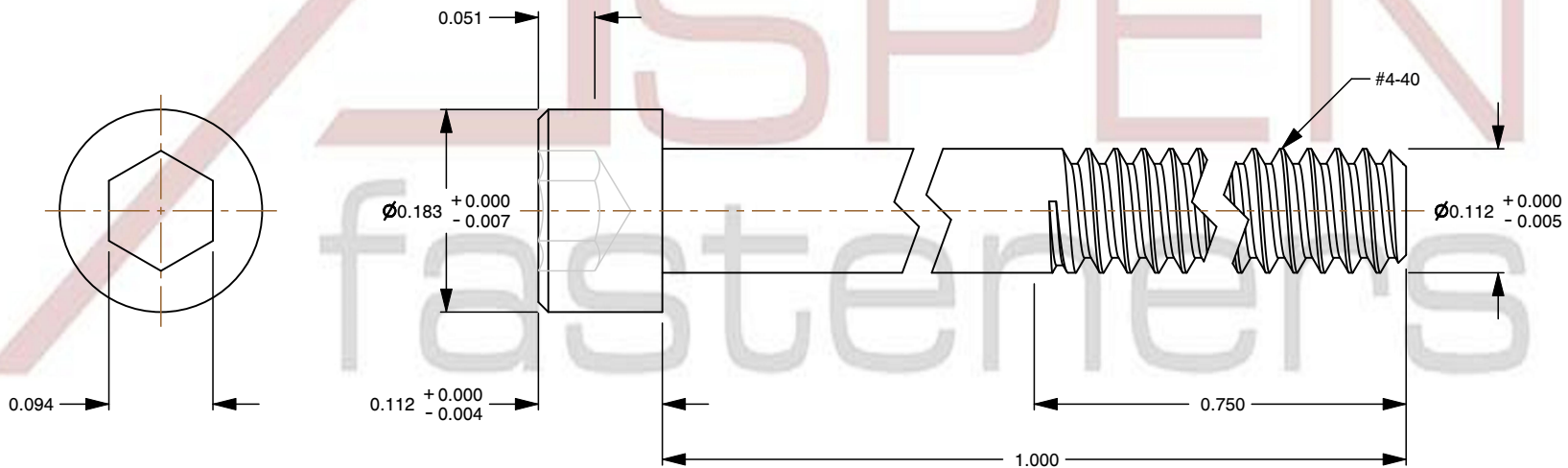
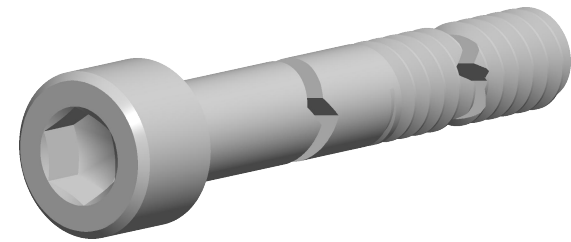



**Specifications for: #4-40 X 1" Hex Socket Head Cap Screws,  
316 Stainless Steel**

**Notes:**

- Category: Socket Head Cap Screws
- System of Measurement: Inch
- Head Style: Cylindrical Head
- Drive Style: Hex Socket Drive
- Thread Direction: Right-Hand Thread
- Material: Stainless Steel
- Material Grade: 316 Stainless Steel
- Coating: Uncoated
- Origin: Origin Undefined



 <a href="http://www.aspenfasteners.com">www.aspenfasteners.com</a>	<p>This file and any associated information and specifications are provided for reference and evaluation purposes only and is subject to change without notice. Aspen Fasteners Inc. makes no representations, warranties, or guarantees as to the appropriateness, accuracy, completeness, or suitability for any purpose of the file, information or specifications. You are solely responsible for the use of the file, information, or specifications.</p>	<p>This document is the property of Aspen Fasteners Inc. and the information it contains may not be reproduced, disclosed, or shared with any third party without the expressed written permission of Aspen Fasteners Inc.</p>	<p>PRODUCT NAME #4-40 X 1" Hex Socket Head Cap Screws, 316 Stainless Steel</p>	<p>UNIT INCHES</p>
			<p>PART NUMBER: ST303-440X1</p>	<p>ISSUED 2026-01-22</p>
		<p>SCALE 6.011</p>		<p>SHEET 1 of 1</p>