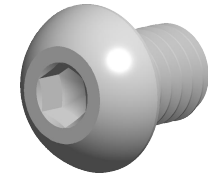


**Specifications for: 3/8"-16 X 1/2" Button Head Hex Socket Cap Screws,  
Alloy Steel, Plain**



Notes:

- Category: Socket Head Cap Screws
- System of Measurement: Inch
- Head Style: Button Head
- Drive Style: Hex Socket Drive
- Threading: Thread Class 3A
- Thread Direction: Right-Hand Thread
- Material: Steel
- Material Grade: Alloy Steel
- Material Processes: Heat Treated
- Coating: Uncoated
- Origin: Origin Undefined
- Standards and Specifications: ASTM F835

