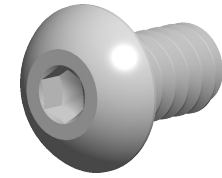


**Specifications for: #6-32 X 1/4" Button Head Hex Socket Cap Screws,
Coarse Thread, Full Thread, Alloy Steel**



Notes:

- Category: Socket Head Cap Screws
- System of Measurement: Inch
- Head Style: Button Head
- Drive Style: Hex Socket Drive
- Pitch: UNRC Coarse Thread
- Thread Length: Full Thread
- Thread Direction: Right-Hand Thread
- Material: Steel
- Material Grade: Alloy Steel
- Coating: Uncoated
- Origin: Origin Undefined
- Standards and Specifications: ANSI B18.3 and ASTM F835

