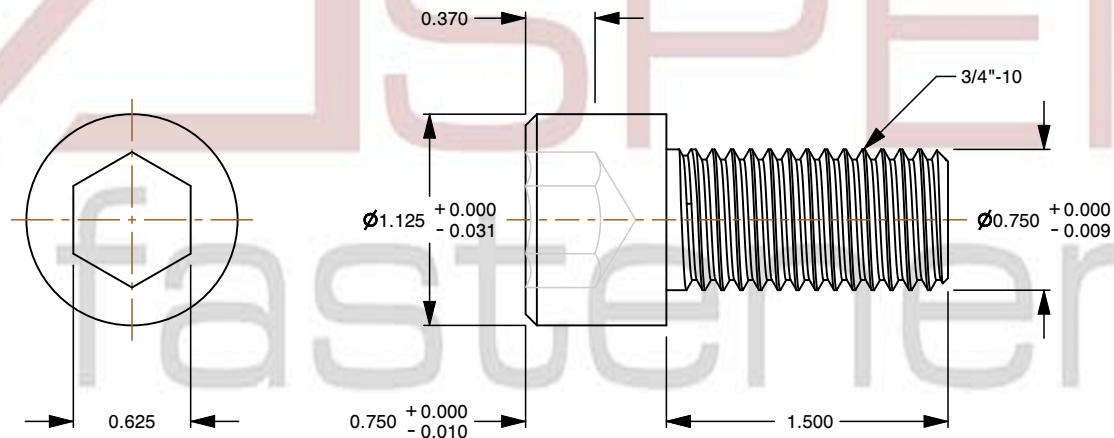
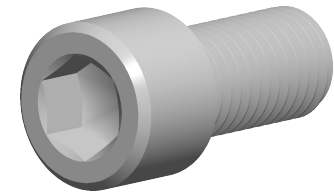



**Specifications for: 3/4"-10 X 1-1/2" Hex Socket Head Cap Screws, Full Thread, Coarse Thread, Alloy Steel, Made in U.S.A.**

Notes:

- Category: Socket Head Cap Screws
- System of Measurement: Inch
- Head Style: Cylindrical Head
- Drive Style: Hex Socket Drive
- Pitch: UNRC Coarse Thread
- Thread Length: Full Thread
- Thread Direction: Right-Hand Thread
- Material: Steel
- Material Grade: Alloy Steel
- Coating: Uncoated
- Origin: Made in U.S.A.
- Standards and Specifications: ASME/ANSI B18.3-2002 and ASTM A574



 <a href="http://www.aspenfasteners.com">www.aspenfasteners.com</a>	This file and any associated information and specifications are provided for reference and evaluation purposes only and is subject to change without notice. Aspen Fasteners Inc. makes no representations, warranties, or guarantees as to the appropriateness, accuracy, completeness, or suitability for any purpose of the file, information or specifications. You are solely responsible for the use of the file, information, or specifications.	This document is the property of Aspen Fasteners Inc. and the information it contains may not be reproduced, disclosed, or shared with any third party without the expressed written permission of Aspen Fasteners Inc.	PRODUCT NAME 3/4"-10 X 1-1/2" Hex Socket Head Cap Screws, Full Thread, Coarse Thread, Alloy Steel, Made in U.S.A.	UNIT INCHES
			PART NUMBER: SO050-3410X112	ISSUED 2026-01-22
		SCALE 0.978	SHEET 1 of 1	