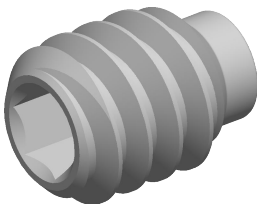
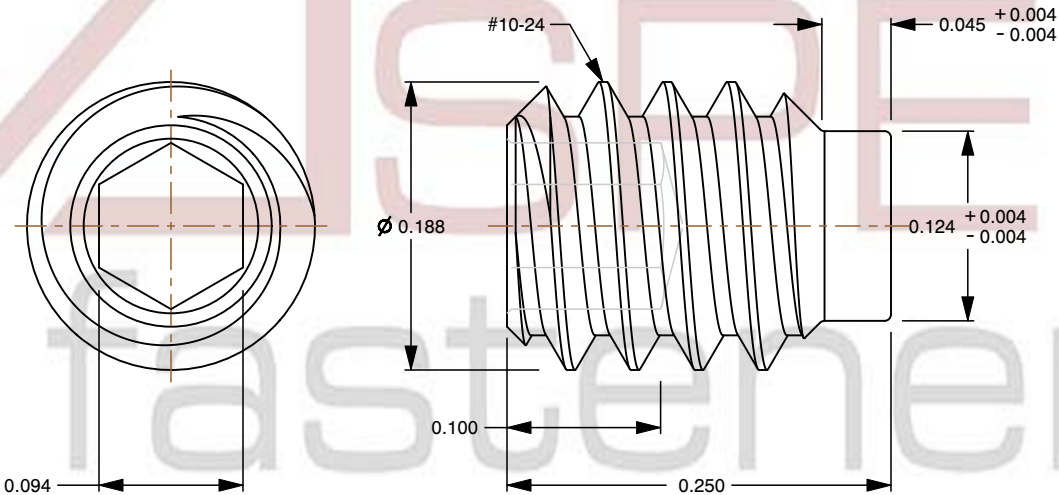



Specifications for: #10-24 X 1/4" Hex Socket Set Screws, Half-Dog Point, Coarse Thread, Full Thread, Alloy Steel

Notes:



- Category: Set Screws
- System of Measurement: Inch
- Head Style: Headless
- Drive Style: Hex Socket Drive
- Pitch: UNRC Coarse Thread
- Thread Length: Full Thread
- Thread Direction: Right-Hand Thread
- Point: Half-Dog Point
- Material: Steel
- Material Grade: Alloy Steel
- Coating: Uncoated
- Origin: Origin Undefined
- Standards and Specifications: ANSI B18.3 and ASTM F912



 www.aspenfasteners.com	This file and any associated information and specifications are provided for reference and evaluation purposes only and is subject to change without notice. Aspen Fasteners Inc. makes no representations, warranties, or guarantees as to the appropriateness, accuracy, completeness, or suitability for any purpose of the file, information or specifications. You are solely responsible for the use of the file, information, or specifications.	This document is the property of Aspen Fasteners Inc. and the information it contains may not be reproduced, disclosed, or shared with any third party without the expressed written permission of Aspen Fasteners Inc.	PRODUCT NAME #10-24 X 1/4" Hex Socket Set Screws, Half-Dog Point, Coarse Thread, Full Thread, Alloy Steel	UNIT INCHES
				ISSUED 2025-06-25
		SCALE 8.000	PART NUMBER: SO070-1024X14	SHEET 1 of 1