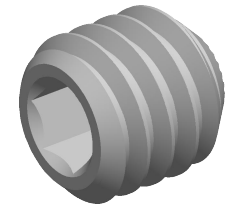


**Specifications for: 5/16"-18 X 5/16" Hex Socket Set Screws, Knurled Cup Point, Coarse Thread, Full Thread, Alloy Steel**



**Notes:**

- Category: Set Screws
- System of Measurement: Inch
- Head Style: Headless
- Drive Style: Hex Socket Drive
- Pitch: UNRC Coarse Thread
- Thread Length: Full Thread
- Thread Direction: Right-Hand Thread
- Point: Knurled Cup Point
- Material: Steel
- Material Grade: Alloy Steel
- Coating: Uncoated
- Origin: Origin Undefined
- Standards and Specifications: ANSI B18.3 and ASTM F912

