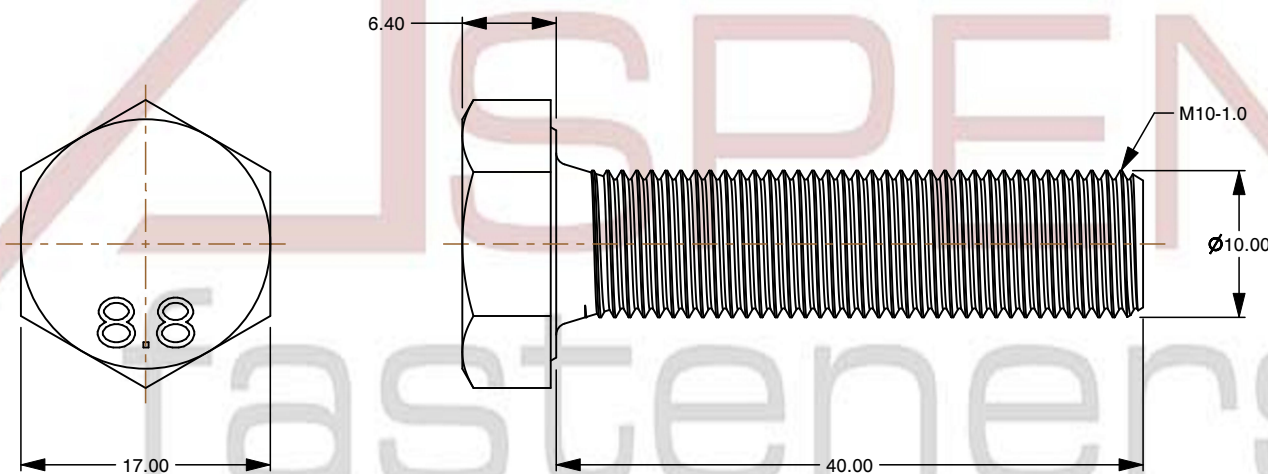
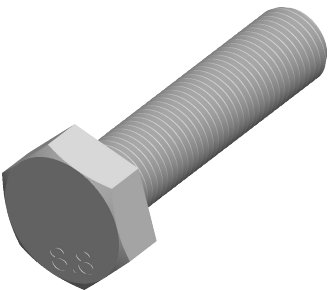



- Notes :
- 1. Category: Cap Screws
  - 2. System of Measurement: Metric
  - 3. Head Style: Hex Head
  - 4. Head Style Detail: Washer Face
  - 5. Drive Style: External Hex Drive
  - 6. Pitch: Fine Thread
  - 7. Thread Length: Full Thread
  - 8. Thread Direction: Right-Hand Thread
  - 9. Point: Chamfered Point
  - 10. Material: Steel
  - 11. Material Grade: Class 8.8 Steel
  - 12. Coating: Zinc Plated
  - 13. Coating Color: Clear
  - 14. Standards and Specifications: DIN 961



 www.aspenfasteners.com	This file and any associated information and specifications are provided for reference and evaluation purposes only and is subject to change without notice. Aspen Fasteners Inc. makes no representations, warranties, or guarantees as to the appropriateness, accuracy, completeness, or suitability for any purpose of the file, information or specifications. You are solely responsible for the use of the file, information, or specifications.	This document is the property of Aspen Fasteners Inc. and the information it contains may not be reproduced, disclosed, or shared with any third party without the expressed written permission of Aspen Fasteners Inc.	PRODUCT NAME M10-1.0 X 40mm DIN 961, Metric, Hex Head Cap Screws Bolts, Fine Thread, Full Thread, Class 8.8 Steel, Zinc Plated	UNIT MILLIMETERS
				ISSUED 2024-01-08
		SCALE 1.941	PART NUMBER: ME190-1010X40	SHEET 1 of 1