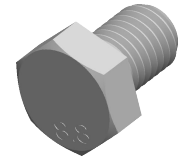


**Specifications for: M14-2.0 X 20mm DIN 933 / ISO 4017, Metric, Hex Head Cap Screws Bolts,  
Full Thread, Class 8.8 Steel, Zinc Plated**



Notes:

- Category: Cap Screws
- Head Style: Hex Head
- System of Measurement: Metric
- Head Style Detail: Washer Face
- Drive Style: External Hex Drive
- Pitch: Coarse Thread
- Thread Length: Full Thread
- Thread Direction: Right-Hand Thread
- Point: Chamfered Point
- Material: Steel
- Material Grade: Class 8.8 Steel
- Material Processes: Quenched and Tempered
- Coating: Zinc Plated
- Coating Color: Clear
- Standards and Specifications: DIN 933 / ISO 4017

