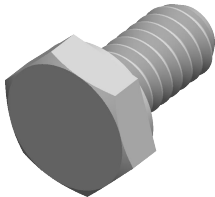


Specifications for: 1/4"-20 X 1/2" Hex Head Cap Screws Bolts, Thread-Locking Patch, Stainless Steel

Notes:



- Category: Cap Screws
- Form and Design: Thread-Locking Patch
- System of Measurement: Inch
- Head Style: Hex Head
- Head Style Detail: Washer Face
- Drive Style: External Hex Drive
- Thread Direction: Right-Hand Thread
- Point: Chamfered Point
- Material: Stainless Steel
- Material Grade: 18-8 Stainless Steel
- Coating: Uncoated
- Standards and Specifications: ASME B18.2.1

