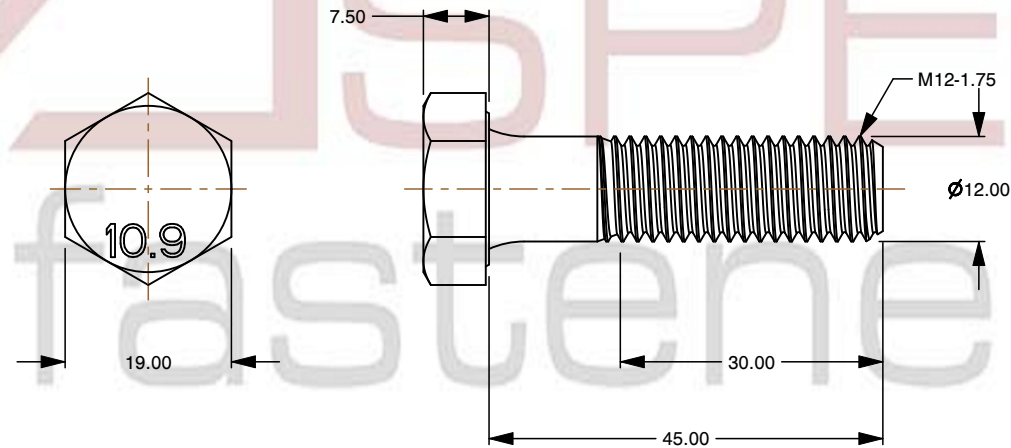
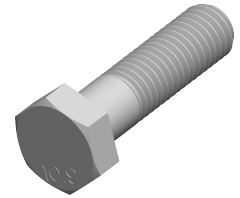


**Specifications for: M12 X 45mm DIN 931 / ISO 4014, Metric, Hex Head Cap Screws Bolts, Part Thread,
Class 10.9 Steel, Plain**

Notes:

1. Category: Cap Screws
2. System of Measurement: Metric
3. Brand: Aspen Fasteners
4. Head Style: Hex Head
5. Head Style Detail: Washer Face
6. Drive Style: External Hex Drive
7. Pitch: Coarse Thread
8. Thread Length: Part Thread
9. Thread Direction: Right-Hand Thread
10. Point: Chamfered Point
11. Material: Steel
12. Material Grade: Class 10.9 Steel
13. Material Processes: Quenched and Tempered
14. Coating: Uncoated
15. Origin: Origin Undefined
16. Standards and Specifications: DIN 931 / ISO 4014



This file and any associated information and specifications are provided for reference and evaluation purposes only and is subject to change without notice. Aspen Fasteners Inc. makes no representations, warranties, or guarantees as to the appropriateness, accuracy, completeness, or suitability for any purpose of the file, information or specifications. You are solely responsible for the use of the file, information, or specifications.

This document is the property of Aspen Fasteners Inc. and the information it contains may not be reproduced, disclosed, or shared with any third party without the expressed written permission of Aspen Fasteners Inc.

SCALE 1.158

PRODUCT NAME
M12 X 45mm DIN 931 / ISO 4014, Metric,
Hex Head Cap Screws Bolts, Part Thread,
Class 10.9 Steel, Plain

PART NUMBER: ME004-12X45

UNIT
MILLIMETERS

ISSUED
2025-07-11

SHEET 1 of 1