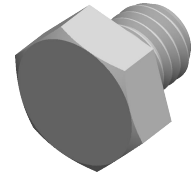


Specifications for: M8-1.25 X 8mm DIN 933 / ISO 4017, Metric, Hex Head Cap Screws Bolts, Full Thread, A2 Stainless Steel



Notes:

- Category: Cap Screws
- Head Style: Hex Head
- System of Measurement: Metric
- Head Style Detail: Washer Face
- Drive Style: External Hex Drive
- Pitch: Coarse Thread
- Thread Length: Full Thread
- Thread Direction: Right-Hand Thread
- Point: Chamfered Point
- Material: Stainless Steel
- Material Grade: A2 Stainless Steel
- Coating: Uncoated
- Standards and Specifications: DIN 933 / ISO 4017

