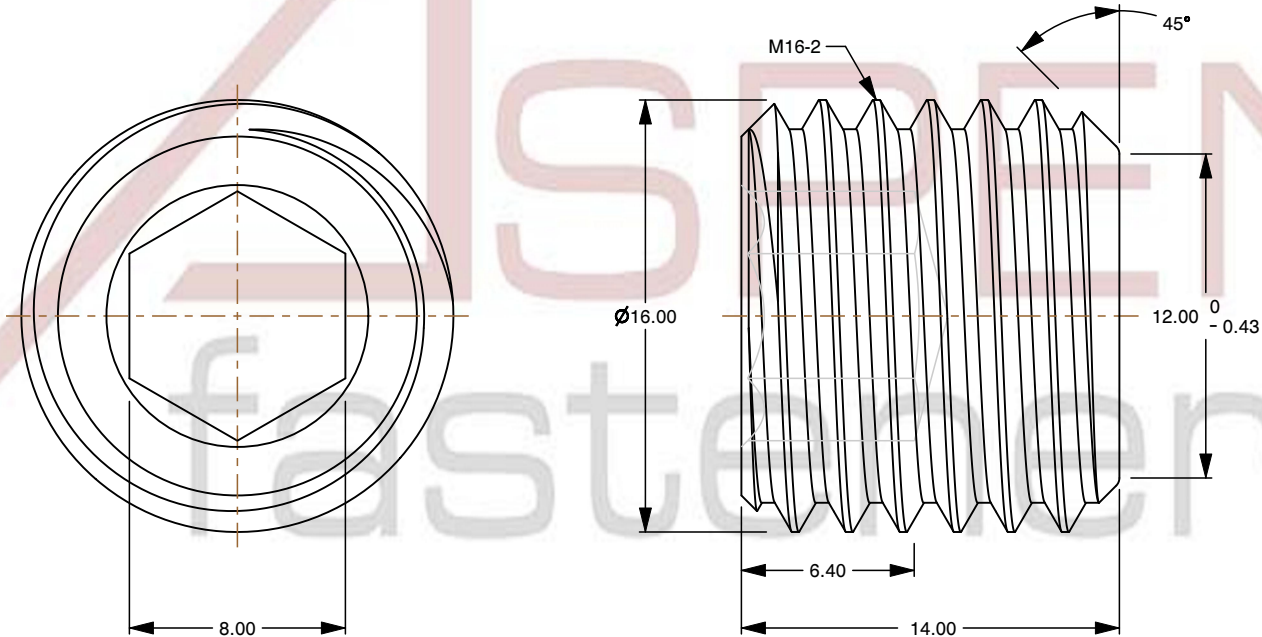
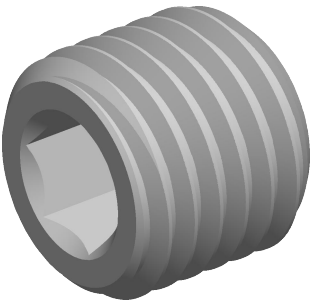



Specifications for: M16-2.0 X 14mm DIN 913 / ISO 4026, Metric, Hex Socket Set Screws, Flat Point, A4 Stainless Steel

- Notes:
- Category: Set Screws
 - System of Measurement: Metric
 - Head Style: Headless
 - Drive Style: Hex Socket Drive
 - Thread Length: Full Thread
 - Thread Direction: Right-Hand Thread
 - Point: Flat Point
 - Material: Stainless Steel
 - Material Grade: A4 Stainless Steel
 - Coating: Uncoated
 - Origin: Origin Undefined
 - Standards and Specifications: DIN 913 / ISO 4026



 www.aspenfasteners.com	This file and any associated information and specifications are provided for reference and evaluation purposes only and is subject to change without notice. Aspen Fasteners Inc. makes no representations, warranties, or guarantees as to the appropriateness, accuracy, completeness, or suitability for any purpose of the file, information or specifications. You are solely responsible for the use of the file, information, or specifications.	This document is the property of Aspen Fasteners Inc. and the information it contains may not be reproduced, disclosed, or shared with any third party without the expressed written permission of Aspen Fasteners Inc.	PRODUCT NAME M16-2.0 X 14mm DIN 913 / ISO 4026, Metric, Hex Socket Set Screws, Flat Point, A4 Stainless Steel	UNIT MILLIMETERS
				ISSUED 2025-01-09
		SCALE 3.572	PART NUMBER: ME264-1620X14	SHEET 1 of 1