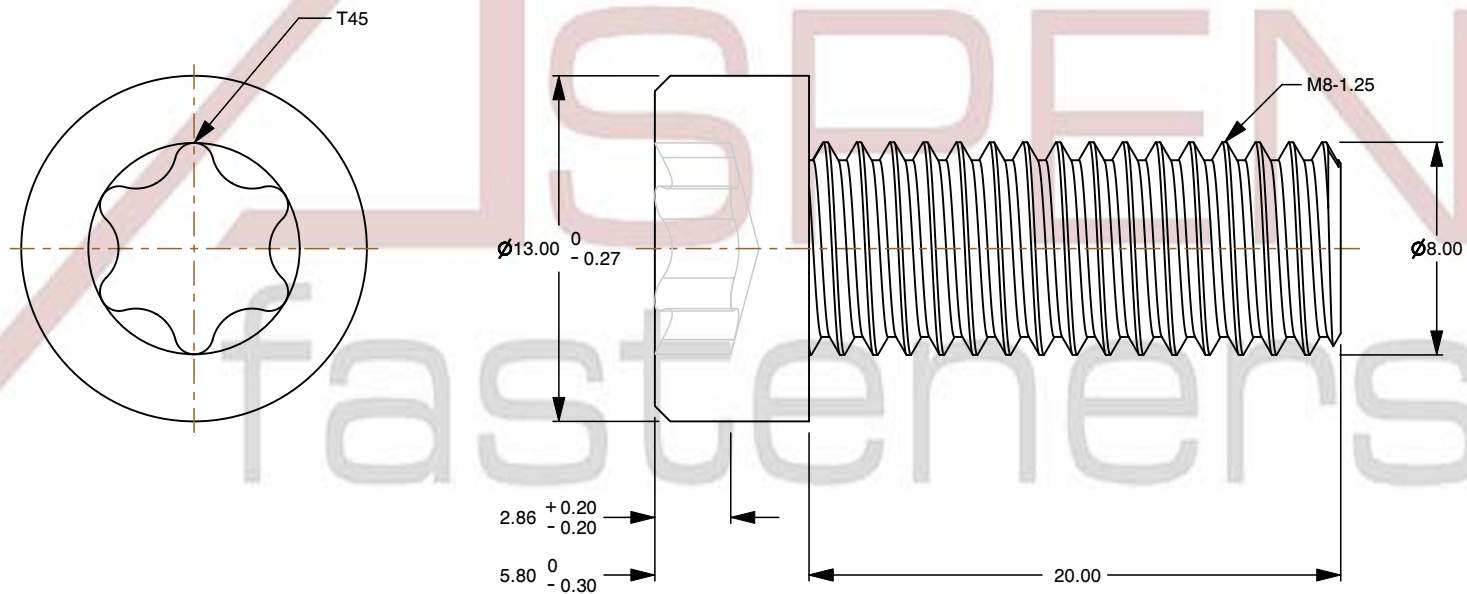
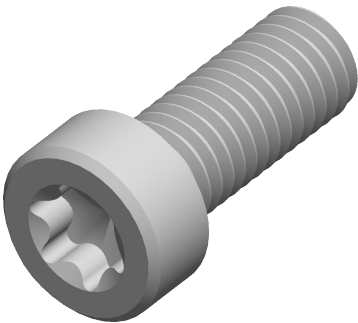



Specifications for: M8-1.25 X 20mm, Thread = 20mm ISO 14580, Metric, Low Head 6Lobe Torx(r)
Socket Cap Screws, A2 Stainless Steel

- Notes:
- Category: Socket Head Cap Screws
 - System of Measurement: Metric
 - Head Style: Low Cylindrical Head
 - Drive Style: 6Lobe Drive
 - Drive Detail: Torx(r) Generic Alternative
 - Thread Direction: Right-Hand Thread
 - Material: Stainless Steel
 - Material Grade: A2 Stainless Steel
 - Coating: Uncoated
 - Origin: Origin Undefined
 - Standards and Specifications: ISO 14580



| | | | | |
|---|---|---|---|----------------------|
|  www.aspenfasteners.com | This file and any associated information and specifications are provided for reference and evaluation purposes only and is subject to change without notice. Aspen Fasteners Inc. makes no representations, warranties, or guarantees as to the appropriateness, accuracy, completeness, or suitability for any purpose of the file, information or specifications. You are solely responsible for the use of the file, information, or specifications. | This document is the property of Aspen Fasteners Inc. and the information it contains may not be reproduced, disclosed, or shared with any third party without the expressed written permission of Aspen Fasteners Inc. | PRODUCT NAME M8-1.25 X 20mm, Thread = 20mm ISO 14580, Metric, Low Head 6Lobe Torx(r) Socket Cap Screws, A2 Stainless Steel | UNIT MILLIMETERS |
| | | | | ISSUED 2025-09-05 |
| | | SCALE 3.517 | PART NUMBER: ME492-8125X20X20 | SHEET 1 of 1 |